

CHICAGO LIVE AUCTION

MAY 12, 2018 | CHICAGO JOURNEYMEN PLUMBERS LOCAL UNION 130UA
11:00 a.m. | 1340 WEST WASHINGTON BOULEVARD, CHICAGO, IL. 60607-1988

Michael W. Frerichs
ILLINOIS STATE TREASURER



/TreasurerMichaelFrerichs



@ILTreasurer

TO VIEW PHOTOGRAPHS AND DETAILED DESCRIPTIONS OF ALL AUCTION LOTS, VISIT ILLINOISTREASURER.GOV

AUCTION DATES, TIMES & LOCATION

- The auction shall be conducted on May 12, 2018 at the Chicago Journeyman Plumbers Local Union 130 UA, Chicago, IL, starting at 11:00 A.M.

CONDITION & DESCRIPTION

- The condition of the items being offered varies greatly. The buyer understands and agrees that the items are sold and accepted by buyer on an "AS IS, WHERE IS" basis with all faults. Any description of items offered by the Office of the Illinois Treasurer ("Treasurer") or its agents is for general informational purposes only, and the items may or may not be exactly as described. The Treasurer offers no warranty or guarantee of condition of authenticity or any item.

INSPECTION & VIEWING

- Bidders are urged to inspect items prior to bidding. Photographs may not show all items in a given lot.
- All of the items will be available for inspection at the auction site on May 12, 2018 from 9 a.m. until 11 a.m. A selection of items will be available for viewing at the James R. Thompson Center, 100 W. Randolph St., Chicago, on Thursday April 19, 2018 from 10:00 a.m. until 1:30 p.m.
- Announcements made the day of auction take precedence over all printed matter.

REGISTRATION

- Persons wishing to bid on items at the auction are required to obtain, complete, and submit a bidder registration card (presented with a driver's licenses/state ID card for verification) at the auction venue prior to the sale. Upon submission and approval of a bidder registration card, each bidder will obtain a bidder number to complete registration.
- Note: Each registered bidder is solely responsible for the use of his/her bidder number and any use by another person is presumed to be with the consent of the registered bidder and is contractually binding on the registered bidder.

BIDDING

- The live auction shall be conducted as an open outcry public auction with progressive bidding. At the close of the live bidding the Auctioneer shall accept the highest bid received, provided that such bid equals or exceeds the unpublished reserve price for the lot. It is each bidder's responsibility to pay attention to items being offered for sale and to bid on items in which the bidder is interested. By bidding, you agree that if you are the high bidder for any lot, you are forming a legal and binding contract to purchase that lot. Do not bid if you do not intend to pay for the item. Do not bid past your available funds, because all purchases must be settled by the completion to the auction. Generally, items are sold in the sequence as listed in the sales catalog. Lot numbers and lot/item descriptions are for administrative purposes only and may not describe the item accurately. Bidders are responsible to ensure the lot number or announced description of any item they intend to purchase matches the item inspected. Sales of items will not be canceled due to bidder misunderstanding, failure to pay attention to the bidding, or failure to inspect items.

PAYMENT

- Payment must be received and items removed from the auction site no later than upon completion of the auction.
- Accepted methods of payment are American Express, Discover, Master Card, and Visa, as well as cash. Please make certain that all successful bids are within credit card limits and bidders must make all necessary arrangements in advance of the auction. Personal checks, money orders, or cashier's checks will not be accepted.

LOT 1



LOT 3



LOT 6



LOT 1	1865 LIBERTY HEAD TWENTY DOLLAR GOLD COIN: NEC AU 53.
LOT 2	LADIES 18K YELLOW GOLD & ENAMEL RING W/RUBY EYES: 7.51 DWT.
LOT 3	OMEGA 14K ROSE GOLD MEN'S POCKET WATCH: (NOT RUNNING).
LOT 4	GENTS ROLEX STAINLESS STEEL OYSTER PERPETUAL DATE WATCH: (NOT RUNNING, BROKEN BAND).
LOT 5	LADIES PLATINUM WATCH: NO NAME ON DIAL OR MOVEMENT; BEZEL SET WITH 26 SINGLE CUT PRONG SET DIAMONDS.
LOT 6	LADIES STERLING SQUASH BLOSSOM NECKLACE W/INLAYS OF SHELL, AGATE, BLACK ONYX & TURQUOISE: PIECE IS SIGNED BY MACELINA VALENCIA OF SAN FELIPE; 19 INCHES IN LENGTH; 66.23 DWT.
LOT 7	PORCELAIN HAND PAINTED BROOCH: GOLD FILLED BEZEL; MEASURING APPROX. 2 1/2" X 2"; BACK DATED 1888.
LOT 8	41 MORGAN DOLLARS: 1879S 2ND REVERSE, 1882, 1882S, 1887, 2-1889, 1889O, 1890, 1892O, 1896O, 1897O, 2-1899O, 1900O, 1901O, 1902, 1904O, 9-1921, 5-1921D, 10-1921S.
LOT 9	1928 PEACE DOLLAR: KEY DATE.
LOT 10	1905 LIBERTY HEAD TEN DOLLAR GOLD PIECE.
LOT 11	LADIES 14K YELLOW GOLD DIAMOND SOLITAIRE ENGAGEMENT RING: DIAMOND; TRANSITION CUT, 0.17 CT EST. COLOR "G", CLARITY SI1, TL WT INC STONE 1.37 DWT.
LOT 12	LADIES 14K YELLOW GOLD/BLUE TOPAZ & DIAMOND RING: TOPAZ IS EMERALD CUT, FACETED, 19.33 CT EST; ACCENTED W/8 ROUND BRILLIANT DIAMONDS; .27 CT EST.
LOT 13	LADIES 14K YELLOW GOLD SAPPHIRE WATERFALL RING: W/25 ROUND SAPPHIRES; CENTER STONE .46 CT; 24 SMALLER STONES 2.88 CT. 3.1 DWT TL WT.



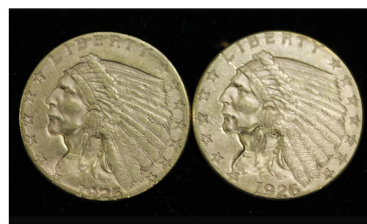
LOT 14



LOT 17



LOT 19



LOT 14	LADIES 14K TWO TONE DIAMOND WEDDING SET: CENTER STONE ROUND BRILLIANT CUT; .39 CT EST. COLOR "G", CLARITY SI1; BANDS ACCENT DIAMONDS CONTAIN 11 SINGLE CUT (ONE MISSING) 0.19 CT EST. TL WT, COLOR "F-G", VS1, TL WT 2.11 DWT.
LOT 15	GENTS OMEGA SEAMASTER DEVILLE AUTOMATIC 14K YELLOW GOLD & STAINLESS STEEL WATCH: BROWN LIZARD GRAIN BAND; PRESENTATION WATCH ENGRAVED ON BACK; CONDITION LIKE NEW.
LOT 16	2 - 1 OUNCE AMERICAN SILVER EAGLE PROOF COINS: 1986 & 1987.
LOT 17	2 - 1929 \$100 NATIONAL CURRENCY BROWN SEAL NOTES: BOTH FEDERAL RESERVE BANK OF CHICAGO. 1928A \$50 REDEEMABLE IN GOLD NOTE, FEDERAL RESERVE BANK OF CHICAGO.
LOT 18	5 - 14K GOLD RINGS: GENTS 14K YELLOW GOLD MASONIC RING; RING FEATURES ONE BEZEL SET EUROPEAN CUT DIAMOND .10 CT EST, COLOR "H", CLARITY VS1, TL WT 4.98 DWT. LADIES 14K TWO TONE BLACK ONYX & DIAMOND RING; RING FEATURES 3 ROUND BLACK ONYX WITH 20 BEAD SET SINGLE CUT DIAMONDS .12 CT EST. TL WT 3.21 DWT. LADIES 14K WHITE GOLD RUBY RING; SNAKE STYLE RING FEATURES 24 PRONG SET ROUND RUBIES, EST WT .96 CT. TOTAL RING WEIGHT 2.95 DWT. LADIES 14K ROSE GOLD JADE RING; RING FEATURES 10 JADE BEADS 8.40 CT. TOTAL RING WEIGHT 2.42 DWT. LADIES 14K YELLOW GOLD RING; 2.4 DWT.
LOT 19	2 - U.S. \$2 1/2 GOLD INDIAN HEAD COINS: 1925D & 1926
LOT 20	1983 CANADIAN MAPLE LEAF 1 OZ .999 FINE GOLD
LOT 21	68 INDIAN HEAD CENTS INCLUDING: 1861, 1864 BRONZE, 1865 (DAMAGED), 1884, 1887, 1899, 1908, 1909, AND 60 MIXED DATE COMMONS.
LOT 22	54 WALKING LIBERTY HALF DOLLARS INCLUDING: 1917 (HALF DATE), 1934, 1935D, 1935S, 1936, 1937, 1937S, 1938, 1943S, 1 - NO DATE, 44 MIXED DATES & MINT MARKS.
LOT 23	72 FRANKIN HALF DOLLARS INCLUDING: 1950, 1951, 1951D, 1952D, 1953D, 1953S, 1954, 1956, 1957D, 1958D AND 62 MIXED DATES & MINT MARKS.

LOT 28



LOT 30



LOT 31



LOT 24	120 KENNEDY HALF DOLLARS: ALL 1964. NOT ALL PICTURED.
LOT 25	218 WASHINGTON QUARTERS: 216 PRE-1965, INCLUDING 1932; 215 W/COMMON MIXED DATES & MINT MARKS; 2 - 1974 (CLAD). 1 STANDING LIBERTY QUARTER (NO DATE).
LOT 26	3 PAIR 14K CUFF LINKS: 14K WHITE GOLD W/DIAMOND CHIPS 9.9 GRAMS TL WT, 14K YELLOW GOLD HOLLOW 8.6 GRAMS TL WT, 14K WHITE GOLD ROUND 4.7 GRAMS TL WT
LOT 27	LADIES 18K WHITE GOLD SAPPHIRE & DIAMOND RING: RING FEATURES 3 BEAD SET; EUROPEAN CUT DIAMONDS W/4 BAQUETTE CUT BEZEL SET SAPPHIRES; DIAMOND COMBINED WEIGHT 0.30 CT EST, COLOR G-H, SI 1 - SI 2. 4 SAPPHIRES; 1 IS BROKEN, 1 IS LOOSE, TL WT 0.12 CT. RING WT 2.27 DWT
LOT 28	GENTS 14K YELLOW GOLD DIAMOND SOLITAIRE MASONIC RING: RING FEATURES 1 BEAD SET OLD EUROPEAN CUT DIAMOND, 0.38 CT (EST), COLOR F, CLARITY SI2, RING WEIGHT 8.21 DWT
LOT 29	LADIES 14K TRI-COLOR SAPPHIRE & DIAMOND RING: RING FEATURES 7 PRONG SET, MARQUIS CUT SAPPHIRES W/9 PRONG SET ROUND BRILLIANT DIAMONDS; RING FITTED W/CUSTOM ADJUSTABLE SHANK. DIAMONDS: 9 ROUND BRILLIANT, 0.51 CT (EST), COLOR G-H, CLARITY VS2 - SI1. SAPPHIRES: 7 - 1.61 CT. TOTAL RING WEIGHT 9.67 DWT
LOT 30	LADIES 14K WHITE GOLD SAPPHIRE & DIAMOND BRACELET: THE BRACELET IS BEZEL SET W/3 EMERALD CUT SAPPHIRES; BEAD SET WITH 3 EUROPEAN CUT DIAMONDS. THE FILIGREE STYLE BRACELET FEATURES A DOUBLE HIDDEN TONGUE CLASP WITH A HIDDEN PIN SAFETY CATCH. BRACELET MEASURES 7 INCHES IN LENGTH; WEIGHS 18.05 DWT. DIAMONDS: 3 - OLD EUROPEAN CUT DIAMONDS COMBINED WT 0.19 EST, COLOR G, CLARITY SI 1. SAPPHIRES: 3 - EMERALD CUT 5.31 CT (EST)
LOT 31	GENTS 14K TWO TONED DIAMOND SOLITAIRE RING: RING FEATURES AN OLD EUROPEAN CUT DIAMOND IN A SQUARE TOP BEAD SET HEAD; DIAMOND 0.66 CT (EST), COLOR F, CLARITY I1. TOTAL RING WEIGHT 9.12 DWT



LOT 35



LOT 36



LOT 37

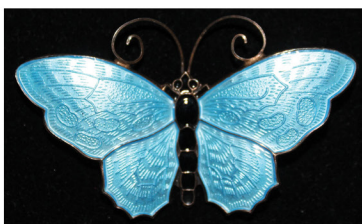


LOT 32	LADIES 18K YELLOW GOLD TOPAZ & CZ RING: RING FEATURES AN OVAL TOPAZ IN A 4 PRONG HEAD W/2 ROUND PRONG SET CZ'S IN A NUGGET STYLE RING; TOPAZ 5.08 CT; TOTAL RING WEIGHT 5.0 DWT
LOT 33	LADIES 18K YELLOW GOLD DIAMOND SOLITAIRE BROOCH: BROOCH FEATURES A EUROPEAN CUT DIAMOND, BEAD SET IN A TOP SQUARE HEAD; WEIGHS 10.58 DWT. DIAMOND: OLD EUROPEAN, 0.41 CT (EST), COLOR G-H, CLARITY I1
LOT 34	LADIES STRAND OF 77 INDIVIDUALLY KNOTTED GRADUATED PEARLS WITH AN ADDITIONAL PEARL IN THE STERLING SILVER CLASP. PEARL SIZE 4.4 MM - 8.5 MM
LOT 35	1912 U.S. FIVE DOLLAR INDIAN HEAD GOLD COIN
LOT 36	1921 PEACE DOLLAR & OTHERS: 1921 (KEY DATE), 4 - 1922, 1922D, 2 - 1922S, 1923
LOT 37	SERIES 1886 ONE DOLLAR "MARTHA WASHINGTON" U.S. NOTE, "ONE SILVER DOLLAR PAYABLE TO BEARER ON DEMAND", SERIES 1899 ONE DOLLAR SILVER CERTIFICATE; (DAMAGED)
LOT 38	136 ONE DOLLAR SILVER CERTIFICATES INCLUDING: 3 - 1928, 1934 "FUNNY BACKS", 1935 HAWAIIAN OVER PRINT, 30 - 1935, 101 - 1957 NOTES.
LOT 39	36 U.S. TWO DOLLAR BILLS INCLUDING: 1953, 1963 STAR NOTES, 25 RED SEAL (14 IN POOR CONDITION), 9 BICENTENNIAL NOTES WITH CANCELLED STAMPS.
LOT 40	1981 SOUTH AFRICA 1/10 OZ KURGERRAND .999 FINE GOLD
LOT 41	394 MERCURY DIMES INCLUDING: 1917, 1917S, 1919, 1924, 1935, 1936, 1937 AND 387 COMMON MIXED DATE & MINT MARKS.
LOT 42	402 ROOSEVELT DIMES: 390 PRE-1965 COMMON MIXED DATES & MINT MARKS; 12 CLAD.
LOT 43	37 BUFFALO NICKELS INCLUDING: 1916 (DARK), 1919, 1920, 1924D, 1927D, 1934; 31 MIXED DATES & MINT MARKS.

LOT 45



LOT 45



LOT 55



LOT 44	6 VINTAGE PINS: 14K YELLOW GOLD BAR PIN W/PEARL, 1.2 GRAMS; HAND PAINTED 3/4" PORCELAIN PIN; UNMARKED GOLD BAR PIN .8 GRAM; EARLY G.F. RELIC PIN (GLASS BACK); LION PIN G.F. W/2 CLAWS; VINTAGE CRESCENT FLORAL PIN W/SM DIAMOND & PEARL, UNMARKED 2.9 GRAMS.
LOT 45	4 CAMEOS AND OTHERS: CORAL CAMEO W/SM DIAMOND & SEED PEARLS, TESTED 14K; SM G.F. CAMEO (CRACKED); STERLING FILIGREE SHELL CAMEO; ENAMELED BUTTERFLY SIGNED D-A (DAVID ANDERSON) NORWAY-STERLING; SHELL CAMEO NOT MARKED - NEEDS BEZEL REPAIR
LOT 46	LADIES 22K YELLOW GOLD NECKLACE: BRAIDED DIAMOND CUT NECKLACE MEASURES 18" IN LENGTH W/S' HOOK CLASP, 14.56 DWT TL WT
LOT 47	1872S SEATED LIBERTY DOLLAR
LOT 48	1898S MORGAN DOLLAR
LOT 49	21 PEACE DOLLARS INCLUDING: 5 - 1922, 2 - 1922D, 3 - 1922S, 1923, 2 - 1923S, 2 - 1924, 1925, 1926, 2 - 1926S, 1928S AND 1923 IN BEZEL WITH CHAIN.
LOT 50	1989 MARSHALL ISLAND \$50 SPACE COINS: 24 COINS; EACH CONTAIN 1 OZ .999 SILVER
LOT 51	5 AMERICAN SILVER EAGLES: 1986, 1989, 1990, 1992 AND 1994. EACH 1 OZ .999 SILVER
LOT 52	STERLING MONEY CLIP WITH 1880O MORGAN DOLLAR
LOT 53	3 HAWAIIAN OVERPRINT NOTES: 1934A FIVE DOLLAR NOTE, 2 - 1935A ONE DOLLAR SILVER CERTIFICATES
LOT 54	13 U.S. FIVE DOLLAR NOTES INCLUDING: 1934 YELLOW SEAL (WWII AFRICA); 3 - 1953 RED SEAL; 1953 RED SEAL STAR NOTE; 7 - 1963 RED SEAL; 1950D FED RESERVE NOTE.
LOT 55	HAMILTON POCKET WATCH 992B: 21J RAILWAY SPECIAL W/LEATHER STRAP, G.F. CASE, RUNNING; ELGIN 7J, OS, (MISSING CRYSTAL), 14K GOLD CASE, NOT RUNNING



LOT 58



LOT 60



LOT 65



LOT 56	HAMPDEN POCKET WATCH: CO 23J SPECIAL RAILWAY 16S, G.F. MULTI-COLOR CASE, G.F. CHAIN, RUNNING
LOT 57	4 WATCH CHAINS: 10K YELLOW GOLD LINK CHAIN 5.4 GRAMS; HALLMARKED STERLING CHAIN & FOB (DATED 1895) 52.4 GRAMS; G.F. YELLOW CHAIN WITH TEMPDEN FOB; G.F. WHITE LINK CHAIN WITH VEST KNIFE
LOT 58	ILLINOIS POCKET WATCH: 17J AUTOCRAT, WHITE G.F. 12S (RUNS/STOPS)
LOT 59	LADIES ELGIN POCKET WATCH: 7J, 14K CASE, RUNS, W/G.F. SLIDE CHAIN; SLIDE CONTAINS OPAL & SEED PEARLS.
LOT 60	NINE GOLD COINS: 4 - ST GEORGE SOVEREIGNS; 2 - 1894, 1895, 1926; FRENCH 20 FRANC 1861 NAPOLEON III 6.4516 GRAMS; SWISS 1915 20F; 1882 ITALY 20 LIRE; 1893 HUNGARY 20 KORONA; 1899 RUSSIAN 10 ROUBLES; 1965 1 TARI BRASS COIN
LOT 61	1890CC MORGAN DOLLARS & OTHERS: 1890CC, 1883O, 1881 (RIM DAMAGE)
LOT 62	142 WASHINGTON QUARTERS: ALL PRE-1965 COMMON MIXED DATES & MINT MARKS; 2 - NO DATE STANDING LIBERTY QUARTERS.
LOT 63	134 LIBERTY NICKELS INCLUDING: GOLD PLATED 1883 WITHOUT CENTS, 1883 WITH CENTS (DARK), 1912D, 131 MIXED COMMON DATES; 1 - SHIELD NICKEL WITHOUT DATE.
LOT 64	183 INDIAN HEAD CENTS INCLUDING: 1863 C-N, 1864, 1865, 1866, 1875, 1908, 1909 AND 176 MIXED DATE COMMONS.
LOT 65	LADIES 18K TWO TONE EMERALD, RUBY AND DIAMOND BROOCH: BROOCH IS PRONG SET W/148 ROUND BRILLIANT CUT DIAMONDS, BEAD SET W/118 ROUND BRILLIANT CUT DIAMONDS, 2 PRONG SET ROUND EMERALD AND 1 ROUND PRONG SET RUBY. TOTAL DIAMONDS 266, 9.04 CT (EST), COLOR G-H, CLARITY VS2-SI1, 29.9 DWT TL WT
LOT 66	LADIES 14K YELLOW GOLD DIAMOND RING: RING FEATURES 2 OLD MINE CUT DIAMONDS IN 6 PRONG HEADS; WEIGHS 1.73 DWT. DIAMONDS: 2 - MINE CUT .45 CT COMBINED WT (EST), COLOR H, CLARITY I1-I2

LOT 75



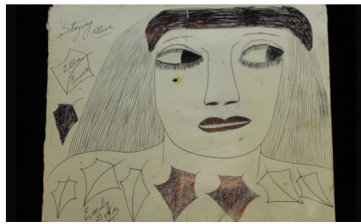
LOT 67	LADIES 10K & 14K TWO TONE DIAMOND WEDDING SET: THE CENTER ROUND BRILLIANT CUT DIAMOND IS IN A 4 PRONG SQUARE TOP HEAD W/7 SINGLE CUT PRONG SET SIDE DIAMONDS. SET WEIGHS 3.05 DWT; DIAMONDS: ROUND BRILLIANT 0.13 CT (EST), COLOR H, CLARITY VS2, 7 SINGLE CUT 0.04 CT (EST), COLOR G, CLARITY VS1-VS2; 1 - LADIES 14K WITH DAMAGED BAND 0.7 DWT
LOT 68	LADIES 14K YELLOW GOLD PEARL & DIAMOND BROOCH: FILIGREE STYLE BROOCH W/7 PRONG TRANSITION CUT DIAMOND & 6 PEARLS; WEIGHS 4.89 DWT; DIAMOND: 0.85 CT (EST), COLOR G-H, SI1; 6 SEED PEARLS, 2.3 MM, ROUND WHITE
LOT 69	32 PEACE DOLLARS INCLUDING: 18 - 1922, 5 - 1922D, 3 - 1922S, 4 - 1923, 1924S, 1927.
LOT 70	1878 LIBERTY HEAD \$2 1/2 GOLD PIECE
LOT 71	5 OUNCES OF .999 FINE SILVER: 3 - 1 OZ BARS, 2 - 1 OZ ROUNDS INCLUDING WALTER PAYTON ALL TIME NFL RUSHING LEADER
LOT 72	12 U.S. PROOF SETS: 1969, 1970, 5 - 1971, 1974, 1980, 1981, 1984, 1987; 11 PIECE JEFFERSON WAR NICKEL SET; 1967 SPECIAL MINT SET
LOT 73	UNITED STATES MINT SET: 1968S, 1972, 1973, 1975, 2 - 1976, 1985, 3 - 1987, 3 - 1988, 2 - 1989, 4 - 1990, 1991, 3 - 1992, 2 - 1994 AND 1987D ONLY
LOT 74	2 CAPPED HALF DIMES: 1835 & ONE NO DATE; 1833 CAPPED BUST DIME
LOT 75	1915 TEN DOLLAR INDIAN HEAD GOLD PIECE
LOT 76	1881S MORGAN SILVER DOLLAR
LOT 77	6 FIVE DOLLAR SILVER CERTIFICATES: 1934, 2 - 1934D, 1934C, 1953, 1953A
LOT 78	2 - SERIES 1914 LARGE SIZE CURRENCY: TEN DOLLAR & FIVE DOLLAR FEDERAL RESERVE NOTES
LOT 79	2 LARGE SIZE 1917 U.S. ONE DOLLAR NOTES
LOT 80	1994 \$10 AMERICAN GOLD EAGLE 1/4 OZ .999 FINE; 1994 SILVER EAGLE 1 OZ .999 FINE.



LOT 89



LOT 89



LOT 89



LOT 81	LADIES 14K YELLOW GOLD CORAL RING: RING FEATURES A BEZEL/WIRE SET ROSE CARVED CABOCHON CORAL; WEIGHS 15.46 DWT; CORAL DIMENSIONS: LENGTH 35 MM, WIDTH 25 MM, DEPTH 12 MM, 83.48 CT (EST); LADIES 14K YELLOW GOLD TIGER EYE RING: FEATURES 1 TIGERS EYE SQUARE CARVED CABOCHON SET WITH A BEZEL/WIRE. TOTAL RING WEIGHT 22.56 DWT
LOT 82	LADIES SQUASH BLOSSOM NECKLACE: CENTER LINK FEATURES 72 PEAR SHAPE IN-LAYS OF TURQUOISE; 40 ROUND INLAYS OF TURQUOISE. EACH OF THE 12 SIDE LINKS HAVE 14 PEARL INLAY TURQUOISE; 4 ROUND INLAY TURQUOISE; MEASURES 29 INCHES IN LENGTH; WEIGHS 63.66 DWT
LOT 83	LADIES 14K YELLOW GOLD LUCIEN PICARD WATCH: WATCH HAS A SINGLE CUT DIAMOND; 17 LINKS CONTAINING 203 CHANNEL SET SINGLE CUT ROUND GARNETS; WEIGHS 17.65 DWT. WATCH: 17J, MODEL C13432, ROUND W/COVER, RUNNING
LOT 84	LADIES 14K WHITE GOLD LONGINES WATCH: VELVET BAND, BOX AND PAPERS. WATCH HAS 20 SINGLE CUT DIAMONDS IN THE DIAL. WATCH: MODEL 11720583, SERIES #1275271, ANALOG 17J MECHANICAL, RUNNING
LOT 85	5 SEATED LIBERTY HALF DOLLARS: 1853 W/ARROWS, 1854O, 1867S, 1873 W/ARROWS, 1875
LOT 86	14 - 1957 UNCIRCULATED CRISP ONE DOLLAR SILVER CERTIFICATES: A GROUP OF 8 & A GROUP OF 5 HAVE CONSECUTIVE SERIAL NUMBERS
LOT 87	4 U.S. SHIELD NICKELS: 2 - 1867, 2 - 1868 (ONE PITTED)
LOT 88	30 RED SEAL TWO DOLLAR BILLS: 7 - 1928 (ONE DAMAGED CORNER), 6 - 1953, 16 - 1963, 1 - 1963 STAR NOTE.
LOT 89	ORIGINAL ART BY CHICAGO ARTIST LEE GODIE: THREE IMAGES, FEMALE, ALL DONE WITH BALL-POINT PEN. 14" X 22" C. 1988-91 ON CARDBOARD. LEE GODIE (BORN JAMOT EMILY GODIE SEPT. 1, 1908) WAS A SELF TAUGHT AMERICAN ARTIST ACTIVE IN CHICAGO DURING THE LATE 60'S TO THE EARLY 90'S, KNOWN FOR HER PAINTINGS AND MODIFIED PHOTOS WHICH ARE SHOWN IN GALLERIES SUCH AS THE HEYWARD GALLERY IN LONDON AND THE SMITHSONIAN AMERICAN ART MUSEUM. SHE IS OFTEN CONSIDERED CHICAGO'S MOST COLLECTED ARTIST. SHE DIED MARCH 4, 1994 AT THE AGE OF 85.

LOT 90



LOT 90	GENTS ROLEX 18K YELLOW GOLD & STAINLESS STEEL OYSTER PERPETUAL DATE JUST WATCH: MODEL 16233, SERIAL NUMBER E325287, CIRCA 1990
LOT 91	GENTS 14K WHITE GOLD DIAMOND BRACELET: FEATURES 6 LINKS EACH W/4 BEZEL SET ROUND BRILLIANT CUT DIAMONDS; MEASURES 8 INCHES IN LENGTH; A HIDDEN HINGE CLASP & FIGURE EIGHT SAFETY; TOTAL WEIGHT 14.4 DWT. DIAMONDS: 24 ROUND BRILLIANT, 1.73 CT (EST), COLOR H, CLARITY I1
LOT 92	217 ASSORTED FOREIGN COINS INCLUDING: 1879, 1876 MEXICAN 8 REAL, 1952 MEXICAN PESO, 1952 MEXICAN 5 PESO, 3 - 1985 1 OZ .999 FINE SILVER MEXICO 1 ONZA, 1995 AUSTRALIA ONE DOLLAR - 1 OZ FINE SILVER, 1929, 1932 5 LITAI, 8 MEXICAN PESOS 1925 - 1945, 198 MIXED FOREIGN & 1 GAMING TOKEN.
LOT 93	U.S. PROOF DOLLARS AND OTHERS: 3 - 1971 EISENHOWER PROOF DOLLARS, 1984 OLYMPIC PROOF DOLLAR, 3 - 1988 OLYMPIC PROOF DOLLARS, 1990 EISENHOWER CENTENNIAL COMMEMORATIVE DOLLAR, 1986 LIBERTY DOLLAR - UNCIRCULATED, 1993 UNCIRCULATED BANK SET
LOT 94	181 - 1964 KENNEDY HALF DOLLARS:
LOT 95	151 WALKING LIBERTY HALF DOLLARS: MIXED DATES & MINT MARKS, ALL COMMONS.
LOT 96	163 MERCURY DIMES INCLUDING: 1916, 1916S, 1919, 1939S, 1941S, 1945S AND 157 MIXED DATES & MINT MARKS. ONE CLAD ROOSEVELT DIME.
LOT 97	76 INDIAN HEAD CENTS INCLUDING: 1859, 1863 C-N, 1873 (WEAK), 1880 FULL LIBERTY, 1890, 1896, 1898, 1909 & 68 MIXED DATES. 1863 "NOT ONE CENT" TOKEN & 1913 LINCOLN WHEAT CENT.
LOT 98	7 U.S. COMMEMORATIVE U.S. HALF DOLLARS: 2 - 1892, 2 1893 COLUMBIAN HALF DOLLARS, 2 - 1946, 1 - 1946D BOOKER T WASHINGTON HALF DOLLARS.
LOT 99	1908 U.S. LIBERTY HEAD FIVE DOLLAR GOLD PIECE
LOT 100	1986 AMERICAN GOLD EAGLE \$50 COIN: 1 OZ .999 FINE GOLD



LOT 101



LOT 111

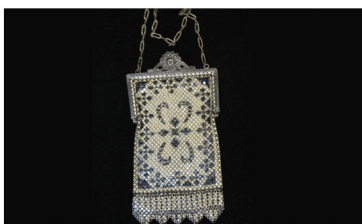


LOT 101	LADIES PLATINUM DIAMOND RING: RING FEATURES 2 PRONG SET OLD EUROPEAN CUT DIAMOND, W/8 CHANNEL SET BAGUETTE CUT DIAMONDS; TOTAL WT. 4.38 DWT. DIAMOND: 2.24CT EST. COLOR "K", CLARITY VVS2, SMALL CHIP ON GIRDLE. DIAMOND: 1.74 CT, EST, COLOR "K-L", CALRITY VS1, LARGE CHIP ON GIRDLE TO PAVILLION.
LOT 102	GENTS SQUARE 14K ROSE GOLD 17J HAPU WATCH: BROWN LEATHER BAND, SILVERTONE FACE, GOLD TONE HOUR MARKERS, RUNNING
LOT 103	BURLINGTON RAILROAD WATCH: 21 JEWEL, GOLD FILLED CASE & CHAIN, 12S, (BROKEN CRYSTAL, NOT RUNNING)
LOT 104	32 MORGAN SILVER DOLLARS: 1878S, 1881S, 1881O, 1882S, 3 - 1884O, 1886, 1886O, 1887O, 1889, 1890, 1890S, 1891S, 1896S, 1897, 1897O, 1899O, 1900, 1902, 1903, 8 - 1921, 3 - 1921D.
LOT 105	164 FRANKIN HALF DOLLARS: COMMON MIXED DATES & MINT MARKS; 1 - 1964 KENNEDY HALF DOLLAR.
LOT 106	46 STANDING LIBERTY QUARTERS: 4 - 1925, 3 - 1926, 1926S, 1927, 2 - 1928, 1928D, 1928S, 1929S, 1930, 2 - 1930S, 29 - NO DATE.
LOT 107	464 ROOSEVELT DIMES: MIXED DATES & MINT MARKS; ALL PRE-1965; 5 CLAD ROOSEVELT DIMES; 1 - 1943 MERCURY DIME.
LOT 108	58 PEACE DOLLARS: 21 - 1922, 2 - 1922D, 5 - 1922S, 6 - 1923, 3 - 1923D, 8 - 1923S, 3 - 1924, 2 - 1924D, 1 - 1924S, 2 - 1925, 1926, 2 - 1926D, 1926S, 1928S.
LOT 109	225 WASHINGTON QUARTERS: 224 COMMON MIXED DATES & MINT MARKS; ALL PRE 1965 INCLUDING 1964 PROOF, 1976S 40% SILVER.
LOT 110	8 U.S. NICKEL THREE CENT PIECES: 2 - 1865, 3 - 1866, 1870, 1873, 1 DAMAGED NO DATE
LOT 111	14K YELLOW GOLD CHARM BRACELET: 8 CHARMS; 31.3 GRAMS TL WT

LOT 112



LOT 118



LOT 122



LOT 112	MISCELLANEOUS JEWELRY INCLUDING: LARGE 3 1/2" X 3 1/2" SPIDER PIN; 2 PRONG SET COAT PINS; PRONG SET BRACELET; 2 EXPANDABLE BRACELETS (1 RHINESTONE, 1 BEADED); 16 ASSORTED PAIRS OF EARRINGS; PIN AND EARRING SET (DAMAGED EARRING); BROOCH - MULTI-COLOR MISSING STONE.
LOT 113	2 - 10K CLASS RINGS: MANS WITH BLUE STONE 8.8 GRAMS, INC STONE; RING WITH GREEN STONE 8.8 GRAMS, INC STONE
LOT 114	1952 PROOF SET IN CAPITOL HOLDER, 1961 PROOF SET, 2 - 1967 SPECIAL MINT SETS
LOT 115	34 MORGAN SILVER DOLLARS: 1878, 1879S, 1880, 1881, 1882O, 1883, 1883CC, 1883O, 1884S, 1885, 1885O, 1886, 1880O, 1886S, 1896, 1896O, 1889, 2 - 1896, 1898S, 1890, 1904, 4 - 1921, 3 - 1921D, 4 - 1921S.
LOT 116	1918 ILLINOIS CENTENNIAL COMMEMORATIVE LINCOLN HALF DOLLAR.
LOT 117	14K GOLD FILLED CHARM BRACELET: 9 G.F. CHARMS, 103.6 GRAMS TL WT; 1 - 14K GOLD CHARM 3.2 GRAMS; STERLING SILVER CHARM BRACELET WITH 15 CHARMS, 52.9 GRAMS TL WT
LOT 118	ENAMELED METAL MESH PURSE BY MANDALIAN MFG CO. 6 1/2" LONG X 3 1/4" WIDE
LOT 119	621 LINCOLN CENTS INCLUDING: 1924D, 3 SETS OF THE 1943 "STEEL" CENTS - P, D & S; 606 COMMON WHEAT CENTS MIXED DATES & MINT MARKS; 6 MEMORIAL CENTS;
LOT 120	2 - 1986 UNCIRCULATED LIBERTY 3 PC COIN SET: DOLLAR, HALF AND FIVE DOLLAR GOLD
LOT 121	36 WALKING LIBERTY HALF DOLLARS: 1939, 1941D, 1941S, 1942S, 1943, 1944, 1946, 29 COMMON MIXED DATES & MINT MARKS.
LOT 122	11 AMERICAN SILVER EAGLES 1 OZ .999 SILVER EACH: 1986, 3 - 1988, 2 - 1989, 1994, 1995, 2 - 1996, 1998.
LOT 123	22 U.S. PROOF SETS: 1975, 2 - 1976, 1978, 1979, 1980, 1981, 1983, 1986, 2 - 1989, 1990, 2 - 1991, 4 - 1992, 3 - 1993, 1995.





LOT 124	1987 PRESTIGE PROOF COIN SET: WITH CONSTITUTION DOLLAR; 1986 LIBERTY PROOF COIN SET, DOLLAR & HALF; 1991 KOREAN WAR MEMORIAL PROOF DOLLAR; 1991 MOUNT RUSHMORE PROOF HALF DOLLAR; 1986 LIBERTY PROOF HALF DOLLAR
LOT 125	2 - 1989 CONGRESSIONAL PROOF DOLLARS: 1984 OLYMPIC UNCIRCULATED DOLLAR; 1986 LIBERTY PROOF HALF DOLLAR; 1986 LIBERTY PROOF DOLLAR; 1987 CONSTITUTION PROOF DOLLAR
LOT 126	1986 AMERICAN GOLD EAGLE: 1/10 OZ .999 FINE GOLD
LOT 127	2 MORGAN SILVER DOLLARS: 1879S 3RD REVERSE, 1881S
LOT 128	2 PEACE TYPE SILVER DOLLARS: 1924, 1925S
LOT 129	10K & 14K PINS AND OTHERS: 14K MULTI-COLORED ROSE PIN 5.5 GRAMS; 14K YELLOW GOLD BAR PIN WITH 19 PEARLS 2.3 GRAMS; 10K BAR PIN WITH 7 BLUE STONES AND 6 PEARLS, 2.2 GRAMS; GOLD PIN W/DIAMOND AND SEED PEARL, THREE ENAMELED FLOWERS WITH DIAMOND CENTER, 6 PRONG SET, ENAMEL HAS SOME DAMAGE. BAR PIN ALSO HAS 14 SEED PEARLS (ONE MISSING); GOLD-FILLED PIN/PENDANT GOLD IN COLOR WITH PRONG SET RHINESTONE & BLUE STONES; BAR PIN WITH DESIGN AND GOLD FILLED W/SMALL TURQUOISE STONE.
LOT 130	5 GOLD RINGS: 4 ROSE GOLD RINGS MARKED .583, 24.7 GRAMS TL WT; 1 SM 18K RING 5.6 GRAMS TL WT
LOT 131	7 GENTS WRIST WATCHES: BENRUS CITATION QUARTZ, GOLD IN COLOR, BLACK FACE, MISSING CROWN; BULOVA QUARTZ, GOLD IN COLOR; PULSAR QUARTZ DAY/DATE, GOLD IN COLOR; SEIKO 17J AUTOMATIC (RUNNING) DAY/DATE, GOLD IN COLOR; SEIKO QUARTZ, GOLD IN COLOR, BROWN CALF SKIN BAND; SEIKO QUARTZ, GOLD IN COLOR; WALTHAM DAY/DATE QUARTZ, GOLD IN COLOR
LOT 132	135 ROOSEVELT DIMES: ALL PRE-1965, ASSORTED DATES & MINT MARKS.
LOT 133	224 BUFFALO NICKELS: 1917, 1918, 1919, 1920, 1923, 1924, 1925, 1929D, 1929S, 1930S, 1934D, 1935, 1938D; 90 COMMON MIXED DATES & MINT MARKS; 121 NO DATE OR ACID DAMAGED "DATE BACKS"; 1 - 1942 JEFFERSON WAR NICKEL; 3 LIBERTY NICKELS 1899, 1900, 1905.



LOT 134	47 U.S. TWO DOLLAR BILLS: 5 - 1928 RED SEAL ONE STAR NOTES (1 DAMAGED); 25 - 1953 ONE STAR NOTES (1 DAMAGED); 13 - 1963 RED SEALS; 1976 UNCUT SHEET OF 4 GREEN SEAL TWO DOLLAR NOTES.
LOT 135	140 ONE DOLLAR SILVER CERTIFICATES: 78 - 1935, 62 - 1957. NOT ALL PICTURED.
LOT 136	14K YELLOW GOLD CRUCIFIX PENDANT: 5.2 GRAMS TL WT
LOT 137	10K & 14K GOLD BANDS: 14K YELLOW GOLD BAND 5.3 GRAMS; 14K YELLOW GOLD BAND, 2.5 GRAMS; 14K YELLOW GOLD BAND W/7 DIAMOND CHIPS, 1.5 GRAMS; 10K YELLOW GOLD BAND, 3.2 GRAMS
LOT 138	2 - 14K WHITE GOLD BANDS: 6.0 GRAMS COMBINED TOTAL WEIGHT
LOT 139	3 - 10K CLASS RINGS: 2 MENS 10K, 25.4 GRAMS TL COMBINED WEIGHT INC STONES; ONE LADIES 10K, 4.0 GRAMS INC STONES.
LOT 140	LADIES 14K LONGINES WATCH: 17J, RUNNING, CASE & BAND 14K YELLOW GOLD, 13.9 GRAMS TOTAL WEIGHT WITHOUT MOVEMENT
LOT 141	24 WALKING LIBERTY HALF DOLLARS: 1916S (OBVERSE), 1917, 1918, 1919D, 1920, 1927S, 1928S, 1929S, 1933S, 1934, 1935, 1936, 1936S, 1937, 1938, 1939; 8 COMMON DATES.
LOT 142	109 FRANKLIN HALF DOLLARS: ALL COMMON DATES & MINT MARKS.
LOT 143	67 KENNEDY HALF DOLLARS: ALL 1964.
LOT 144	15 OUNCES OF .999 FINE SILVER: 12 - 1 OZ SILVER BAR; 3 - 1 OZ SILVER ROUNDS
LOT 145	NATIONAL BICENTENNIAL MEDAL: 13.1 GRAMS OF 90% GOLD
LOT 146	490 FOREIGN COINS AND OTHERS: MARIA THERESA THALER; 6 - 1968 MEXICAN 25 PESO; 1948 - 5 PESO; 1960 - 10 PESO; 1978 - 100 PESO; 1965 CHURCHILL CROWN; ITALY 200 LIRE COIN IN 14K BEZEL, APPROX 1.27 GRAMS 14K GOLD; 478 MIXED FOREIGN COINS; 2 U.S. LARGE CENTS 1808, 1845; 1946 WHEAT CENT; 7 MISC TOKENS; 1 UNKNOWN COIN/TOKEN.



LOT 147



LOT 150



LOT 153



LOT 147	77 INDIAN HEAD CENTS: 1862 C-N, 1863 C-N, 1964 C-N, 1865, 1874, 1875, 1882, 1889, 1890, 1908, 67 MIXED COMMON DATES.
LOT 148	2 - 1857 U.S. FLYING EAGLE CENTS
LOT 149	104 MERCURY DIMES: ALL COMMON MIXED DATES & MINT MARKS.
LOT 150	1947 MEXICO 50 PESO GOLD COIN IN 14K BEZEL: BEZEL 3.6 GRAMS, 14K
LOT 151	5 U.S. LARGE CENTS: 3 - 1848, 1850, 1851; 1 U.S. TWO CENT PIECE 1865
LOT 152	BICENTENNIAL COMMEMORATIVE GOLD COIN: .999 FINE, 20 GRAMS; JIMMY CARTER INAUGURAL GOLD MEDAL 2.5 GRAMS
LOT 153	13 BARBER HALF DOLLARS: 1897, 1899, 2 - 1902, 2 - 1903, 1904, 1905O, 1906, 1908O, 1912, 1912D, 1915S
LOT 154	23 BARBER QUARTERS: 1892, 1893, 1894, 1895, 2-1896, 1897, 1899, 1899O, 1903O, 1906, 1907, 1908D, 2-1911, 3-1914, 1915, 4-1916D.
LOT 155	41 BARBER DIMES: 1892, 1892O, 1898, 1901, 2-1902, 1903, 1903O, 1905S (DAMAGED), 1906, 1906D, 4-1907 (1DAMAGED), 1907D, 2-1908, 1908D, 1909, 1909D, 1909O, 3-1910, 2-1911, 3-1912, 1912D, 3-1913, 2-1914, 1915, 4-1916. 2 MERCURY DIMES 1942, 1943S.
LOT 156	MISCELLANEOUS COIN SETS & OTHERS: 2-1964 MINT SETS P & D IN PLASTIC HOLDERS; 2-1964 P TYPE SETS IN PLASTIC HOLDERS; 4 - PRESIDENTIAL COIN SETS IN PLASTIC HOLDERS; 2-1964 TYPE SETS IN PLASTIC HOLDERS; 2-SBA SOUVENIR SETS 1979, 1980 P,D,S; EISENHOWER GOLD PLATED DOUBLE DATED 1945-1985 TO COMMEMORATE THE 40TH ANNIVERSARY OF THE END OF WWII; 1971 IKE DOLLAR IN MEMORIAL HOLDER.
LOT 157	325 LINCOLN CENTS: 201 WHEAT CENTS W/COMMON MIXED DATES & MINT MARKS; 22-1943 "STEEL CENTS"; 2-LINCOLN MEMORIALS.
LOT 158	114 JEFFERSON NICKELS: COMMON MIXED DATES & MINT MARKS; 30 SILVER WAR NICKELS.



LOT 159	137 WASHINGTON QUARTERS: 1932, 1932D; 134-COMMON MIXED DATES & MINT MARKS; 1-1965 CLAD.
LOT 160	5 GENTS WRIST WATCHES: LORD ELGIN SHOCK MASTER, G.F., ROUND, (RUNNING); BULOVA ROLLED GOLD PLATE, ROUND, (RUNNING), W/BROWN LEATHER BAND; BULOVA SELF WINDING, ROLLED GOLD PLATE, ROUND, (RUNNING); CARAVELLE, GOLD IN COLOR BASE METAL, COLORED BAND, ROUND, (RUNNING); LORD ELGIN 14K GOLD FILLED, RECTANGLE, MISSING CROWN, (NOT RUNNING).
LOT 161	9 ASSORTED STERLING SPOONS: 151.2 GRAMS TOTAL WEIGHT.
LOT 162	88 BUFFALO NICKELS: 1920, 1924S, 1927, 1927S, 1928, 1929, 1929S, 1934, 1935S, 1936, 1936D, 1937; 29-COMMON MIXED DATE & MINT MARKS; 45-NO DATES & 2 DAMAGED; 1-1964 JEFFERSON.
LOT 163	LADIES 14K WHITE GOLD LONGINES WATCH: 17J, W/SIX SINGLE CUT, BEAD SET, DIAMONDS, GOLD FILLED BAND. (RUNNING).
LOT 164	GENTS 10K YELLOW GOLD RING: 2 PESO NUGGET STYLE, 14.08 DWT.
LOT 165	3 FLYING EAGLE CENTS: 1858 LARGE LETTERS; 1858 SMALL LETTERS (PITTED); 1858 LARGE LETTERS (PITTED).
LOT 166	GENTS 14K WHITE GOLD DIAMOND RING: CENTER STONE 1/3 OF STONE BROKEN & MISSING, 6 SINGLE CUT ACCENT DIAMONDS, .17CT EST., TOTAL WT. 4.49 DWT.
LOT 167	5 U.S. TWO CENT PIECES: 2-1864, 2-1866, 1868.
LOT 168	27 FRANKLIN HALF DOLLARS: 1949S, 1951S, 1953D, 1961D, 1963D; 22-MIXED COMMON DATES & MINT MARKS.
LOT 169	15 U.S. PROOF SETS: 3-1987, 4-1988, 1990, 1991, 1993, 1994, 1995, 1996; 2-SILVER PROOF SETS; 1992, 1997.
LOT 170	72 FOREIGN BANK NOTES: BANK OF ENGLAND 10 SHILLINGS; 1954 CANADIAN 1 DOLLAR; 1972 CANADIAN 5 DOLLAR NOTE; 1977 10 KRONER FROM NORWAY; SPAIN 5 PIASTRES; 1914 MEXICO 1 PESO; 66 ASSORTED BANK NOTES FROM VARIOUS COUNTRIES.

VISIT
ILLINOISTREASURER.GOV
TO LEARN MORE ABOUT
OUR ONLINE AUCTIONS

LOT 171	ASSORTED FOREIGN COINS & SETS: 1972 CANADIAN MINT SET; 9 COINS OF THE WORLD (5 COINS PER CARD); SET OF 6 COINS AUSTRALIAN DECIMAL SET; 1972 SAN MARINO TYPE SET; 1967 CANADIAN CENTENNIAL SET; 11 VARIOUS FIVE DOLLAR MARSHALL ISLAND COMMEMORATIVE COINS.
LOT 172	5 BICENTENNIAL COIN SET: 1976 3 PC SILVER PROOF SET; 4-1976 3 PC SILVER UNCIRCULATED SETS.
LOT 173	OBSOLETE COIN SETS: 2 SETS CONTAINING 5 COINS EACH; 2-WALKING LIBERTY HALVES; STANDING LIBERTY SETS; 2- MERCURY DIMES; 2-BUFFALO NICKELS; 2-INDIAN CENTS TOTAL; COIN SETS OF YESTERYEAR; WALKING LIBERTY HALF; 1964 QUARTER; MERCURY DIME; JEFFERSON WAR NICKEL; 1943 STEEL CENT.
LOT 174	22 - 1987 AMERICAN SILVER EAGLES: 1 OZ OF .999 FINE SILVER.
LOT 175	1986 AMERICAN GOLD EAGLE COIN: 25 DOLLAR HALF OUNCE .999 FINE GOLD.

**Please visit the
Treasurer's Office Website
to view these and additional photos
of items up for bid at the
Chicago Live Auction.**

www.illinoistreasurer.gov

[illegible]

