



Michael W. Frerichs

ILLINOIS STATE TREASURER

2025 LIVE AUCTION BOOKLET

SATURDAY, AUGUST 16 • 11:00 AM • ILLINOIS STATE FAIR

TERMS AND CONDITIONS OF SALE

AUCTION DATES, TIMES & LOCATION

- The auction shall be conducted on Saturday August 16th, 2025 at the Illinois State Fairgrounds (Lincoln Stage), Springfield, IL, starting at 11:00 a.m. There will be a preview from 9:00 a.m. until 11:00 a.m.

CONDITION & DESCRIPTION

- The condition of the items being offered varies greatly. The buyer understands and agrees that the items are sold and accepted by buyer on an "AS IS, WHERE IS" basis with all faults. Any description of items offered by the Office of the Illinois Treasurer ("Treasurer") or its agents is for general informational purposes only, and the items may or may not be exactly as described. The Treasurer offers no warranty or guarantee of condition or authenticity of any item.

INSPECTION & VIEWING

- Bidders are urged to inspect items prior to bidding. Photographs may not show all items in a given lot.
- All of the items will be available for inspection on Tuesday August 5th, 2025 from 10:00 a.m. until 3:00 p.m. in the Treasurer's office at 1 E. Old State Capitol Plaza, Springfield IL.
- Announcements made the day of auction take precedence over all printed matter.

REGISTRATION

- Persons wishing to bid on items at the auction are required to obtain, complete, and submit a bidder registration card (presented with a driver's license/state ID card for verification) at the auction venue prior to the sale. Upon submission and approval of a bidder registration card, each bidder will obtain a bidder number to complete registration.
- Note: Each registered bidder is solely responsible for the use of his/her bidder number and any use by another person is presumed to be with the consent of the registered bidder and is contractually binding on the registered bidder.

BIDDING

- The live auction shall be conducted as an open outcry public auction with progressive bidding. At the close of the live bidding the Auctioneer shall accept the highest bid received, provided that such bid equals or exceeds the unpublished reserve price for the lot. It is each bidder's responsibility to pay attention to items being offered for sale and to bid on items in which the bidder is interested. By bidding, you agree that if you are the high bidder for any lot, you are forming a legal and binding contract to purchase that lot. Do not bid if you do not intend to pay for the item. Do not bid past your available funds, because all purchases must be settled by the completion of the auction. Generally, items are sold in the sequence as listed in the sales catalog. Lot numbers and lot/item descriptions are for administrative purposes only and may not describe the item accurately. Bidders are responsible to ensure the lot number or announced description of any item they intend to purchase matches the item inspected. Sales of items will not be canceled due to bidder misunderstanding, failure to pay attention to the bidding, or failure to inspect items.

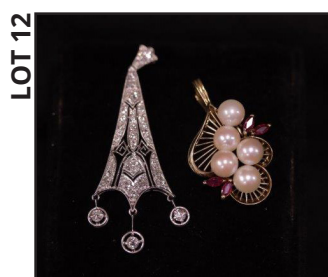
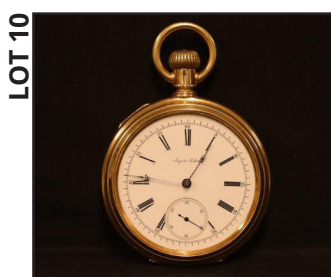
PAYMENT

- Payment must be received and items removed from the auction site no later than upon completion of the auction.
- Accepted methods of payment are American Express, Discover, Master Card, and Visa, as well as cash. Please make certain that all successful bids are within credit card limits and bidders must make all necessary arrangements in advance of the auction. Personal checks, money orders, or cashier's checks will not be accepted.



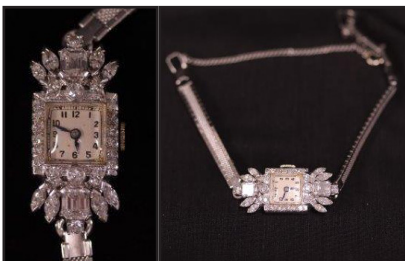


1	10 OZ JOHNSON MATTHEY .9999 FINE GOLD BAR
2	2 U.S. LARGE SIZE ONE DOLLAR NOTES: SERIES 1917 RED SEAL, SERIES 1923 BLUE SEAL SILVER CERTIFICATE
3	GOLD NECKLACE / EARRING SET CONTAINING: 1/4 OZ GOLD EAGLE IN BEZEL AND 14K CHAIN 15.7G TL WT, PAIR OF EARRINGS CONTAINING 2 1/10 OZ GOLD EAGLES SET IN 14K BEZELS 9.7G TL WT
4	ONE STAMPED 18KT YELLOW GOLD LADY'S LINK BRACELET W/ TRADEMARK OF SOIVI; TOTAL WEIGHT OF LINK BRACELET IS 26.82DWT
5	ONE ELECTRONICALLY TESTED 18KT YELLOW GOLD LADY'S CHARM CHAIN BRACELET TWENTY-THREE 14KT - 18KT YELLOW GOLD CHARMS, INCLUDING A 10KT FRAMED SHELL CAMEO; TOTAL WEIGHT OF CHAIN BRACELET IS 87.74DWT
6	2 U.S. LIBERTY HEAD TWENTY DOLLAR GOLD COINS: 1901S, 1904S
7	50 AMERICAN SILVER EAGLES 1 OZ .999 FINE SILVER EACH
8	24 MORGAN SILVER DOLLARS: 1878, 2-1879, 1879S, 1880, 2-1882, 1882S, 1882O, 1883, 1884O, 1887O, 1888, 1889, 3-1890O, 1891O, 1896O, 1897, 1899O, 2-1921, 1921D
9	57 PEACE DOLLARS: 1921, 56 COMMON MIXED DATES AND MINT MARKS
10	ONE MAN'S AUGUSTE SALTZMAN POCKET WATCH STAMPED 18K YELLOW GOLD (MISSING CRYSTAL); TOTAL WEIGHT OF WATCH IS 96.54DWT
11	ONE STAMPED 14KT YELLOW GOLD MAN'S SOLITAIRE RING CONTAINING: ONE ILLUSION SET EARLY MODERN BRILLIANT CUT DIAMOND (I-1 CLARITY) W/ APPROX. WEIGHT OF 0.66CT; TOTAL WEIGHT OF RING IS 9.14DWT
12	TWO PENDANTS: ONE ELECTRONICALLY TESTED PLATINUM EDWARDIAN PENDANT CONTAINING: 11 BEAD SET OLD EUROPEAN CUT DIAMONDS (VS-1 TO SI-1 CLARITY) APPROX. 1.00CT; 21 BEAD SET OLD EUROPEAN SINGLE CUT DIAMONDS (VS-1 TO I-1 CLARITY), APPROX. 0.5CT; TOTAL WEIGHT OF PENDANT IS 3.23DWT. ONE ELECTRONICALLY TESTED 14KT YELLOW GOLD LADY'S CAST PENDANT W/ FIVE AKOYA CULTURED PEARLS & FOUR NATURAL RUBIES WITH APPROX. WEIGHT OF 0.32CT; TOTAL WEIGHT OF PENDANT IS 3.54DWT
13	2 PAIRS OF EARRINGS: ONE PAIR ELECTRONICALLY TESTED PLATINUM LADY'S DANGLE EARRINGS WITH SCREW BACKS CONTAINING: TWO BEAD SET OLD EUROPEAN CUT DIAMONDS (VS-1 TO VS-2 CLARITY); APPROX. WEIGHT IS 1.23CT & 58 BEAD SET OLD EUROPEAN SINGLE CUT DIAMONDS (VS-1 TO SI-2 CLARITY); APPROX. WEIGHT OF 1.00CT; TOTAL WEIGHT OF EARRINGS IS 5.35DWT; ONE PAIR STAMPED 14KT YELLOW GOLD LADY'S STUD EARRINGS W/ FRICTION POST CONTAINING: TWO PRONG SET OLD EUROPEAN DIAMONDS (VS-2 TO SI-2 CLARITY); APPROX. WEIGHT IS 0.34CT; TOTAL WEIGHT OF STUD EARRINGS IS 1.49DWT

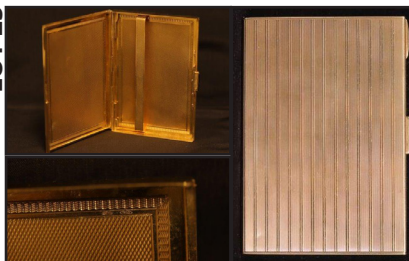


14	ONE STAMPED PLATINUM & 14KT WHITE GOLD LADY'S FILIGREE ART DECO BRACELET CONTAINING: TEN BEZEL SET MARQUISE MODIFIED MIXED CUT NATURAL BLUE SAPPHIRES WITH APPROX. TOTAL WEIGHT OF 1.50CT & 5 BEAD SET OLD EUROPEAN CUT DIAMONDS (VS-1 TO VS-2 CLARITY) WITH APPROX. WEIGHT OF 0.54CT; TOTAL WEIGHT OF BRACELET IS 6.93DWT
15	ONE LADY'S GLYCINE WRIST WATCH STAMPED PLATINUM W/ 34 TOTAL DIAMONDS (VS-1 TO SI-1 CLARITY) WITH APPROX. WEIGHT OF 2.18CT; TOTAL WEIGHT OF WATCH IS 10.80DWT
16	ONE STAMPED 14KT YELLOW GOLD LADY'S BEAD BRACELET; TOTAL WEIGHT IS 38.06DWT
17	FOUR ELECTRONICALLY TESTED 18KT CAROUSEL ANIMAL PINS W/ RUBY, SAPPHIRE, EMERALD & DIAMOND STONES; TOTAL WEIGHT OF PINS IS 27.28DWT
18	NATIONAL ACADEMY OF DESIGN 14K GOLD MEDAL 37.9G
19	ONE STAMPED 14KT WHITE GOLD LADY'S 3-STONE RING W/ 3 DIAMONDS (ONE IS CHIPPED) WITH APPROX. WEIGHT OF 1.36CT; TOTAL WEIGHT OF RING IS 1.71DWT
20	1 OZ VALCAMBI GOLD BAR .999 FINE
21	4 SILVER EAGLE PROOF COINS: 1989S, 1991S, 1998P, 1999P
22	2 BUST HALVES: 1808 [GOUGE NEAR CAP], 1810
23	1862 SEATED QUARTER
24	10 OZ ENGLEHARD .999 FINE SILVER BAR
25	18K GOLD CIGARETTE CASE 174.8G
26	199 BUFFALO NICKELS ALL CLEANED OR TREATED
27	14K YELLOW GOLD BRACELET 20.8G
28	14K YELLOW GOLD BRACELET 18.3G
29	14K YELLOW GOLD BRACELET 14.9G
30	U.S. \$500 NOTE SERIES 1934A
31	924 INDIAN HEAD CENTS; MIXED COMMON DATES AND MINT MARKS
32	U.S. FIFTY DOLLAR GOLD CERTIFICATE LG SIZE NOTE SERIES 1922
33	U.S. ONE HUNDRED DOLLAR GOLD COIN LARGE SIZE NOTE SERIES 1922
34	4 PEACE DOLLARS: 1924S, 1925S, 1928P, 1934S
35	132 WALKING LIBERTY HALF DOLLARS; COMMON MIXED DATES AND MINT MARKS
36	232 FRANKLIN HALVES; MIXED DATES AND MINT MARKS
37	114 HALF DOLLARS; 109-PRE 1964 KENNEDY, 4 CLAD KENNEDY, AND 1 FRANKLIN HALF DOLLAR
38	193 LIBERTY NICKELS: 5-1898 W/O CENTS, 2-1912D, 186 COMMON DATES, AND 1-1867 SHIELD NICKEL
39	370 BUFFALO NICKELS COMMON MIXED DATES AND MINT MARKS, SOME NO DATES
40	2 AMERICAN GOLD EAGLE 1/4 OZ COINS: 1987, 1992 PROOF
41	3 AMERICAN SILVER EAGLE PROOF COINS: 1992S, 1993P, 2007W
42	MEXICAN SILVER: 5 PESO SET OF 4, 1948 FIVE PESO, 11-1 OZ SILVER: 1982, 1983, 4-1984, 5-1985
43	4 - 1968 BASEBALL CARDS: MANTLE, BANKS, KOOSMAN/RYAN, BENCH/TOMPKINS

LOT 15

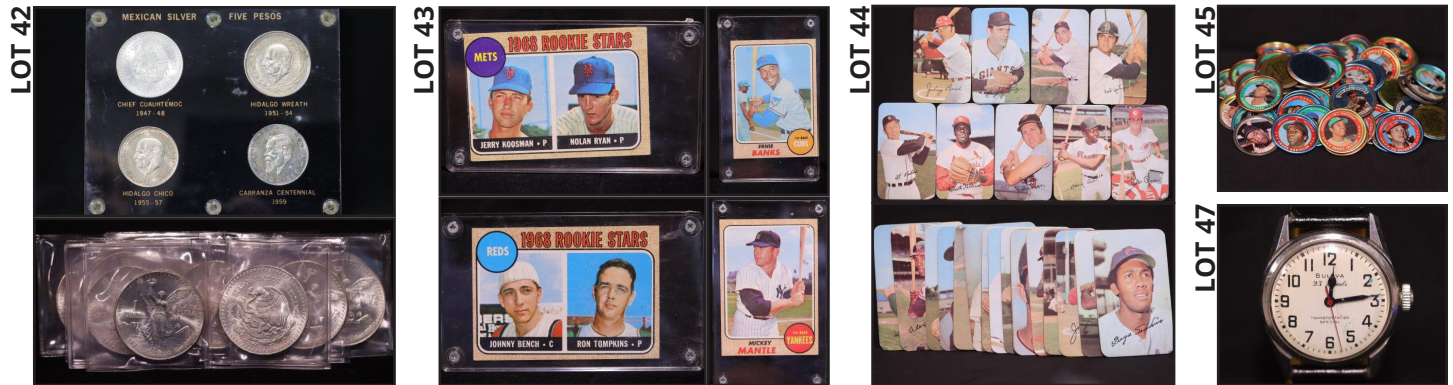


LOT 25



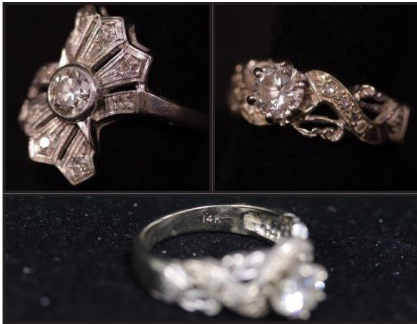
LOT 32





44	25 TOPPS LG SIZE SUPER BASEBALL CARDS
45	75 TOPPS BASEBALL COINS
46	ONE MAN'S BENRUS WRIST WATCH STAMPED 14KT YELLOW GOLD
47	ONE MAN'S BULOVA TRANSPORTATION SPECIAL WRIST WATCH STAMPED STAINLESS STEEL; TOTAL WEIGHT IS 22.54DWT
48	ONE ELECTRONICALLY TESTED 14-18KT YELLOW GOLD MAN'S CHAIN & ANCHOR WITH CRUCIFIX PENDANT; 24" LONG WITH TOTAL WEIGHT OF PENDANT & CHAIN BEING 28.52DWT
49	ONE PAIR STAMPED 14KT YELLOW GOLD LADY'S DANGLE EARRINGS W/ SCREWBACK CONTAINING: TWO OVAL SHAPE CABOCHON JADEITE WITH APPROX. WEIGHT OF 11.67CT; TOTAL WEIGHT OF EARRINGS IS 5.29DWT
50	1847 U.S. LIBERTY HEAD TEN DOLLAR GOLD COIN
51	2 U.S. LIBERTY HEAD FIVE DOLLAR GOLD COINS; 1901S, 1906D
52	1854 U.S. ONE DOLLAR GOLD COIN
53	ONE STAMPED 14KT WHITE GOLD LADY'S SWIRL RING CONTAINING: ONE ROUND BRILLIANT CUT DIAMOND (VS-1 CLARITY) WITH APPROX. WEIGHT OF 0.26CT; 12 SINGLE CUT DIAMONDS (VS-1 TO SI-1 CLARITY) WITH TOTAL APPROX. WEIGHT OF 0.20CT; TOTAL WEIGHT OF RING IS 3.58DWT
54	BICENTENNIAL PROOF AND UNCIRCULATED SETS: 6 - 1976 3PC BICENTENNIAL PROOF SETS, 5 - 3 PC UNCIRCULATED SETS, ALL 40% SILVER
55	10 U.S. PROOF SETS: 1955, 1956, 1957, 1958, 1959, 1960, 1961, 1962, 1963, 1964 ALL IN ORIGINAL PACKAGING
56	ONE ELECTRONICALLY TESTED 14KT YELLOW GOLD LADY'S SOLITAIRE ENGAGEMENT RING SOLDERED TO RING GUARD CONTAINING: ONE ROUND BRILLIANT CUT DIAMOND (I-2 CLARITY) WITH APPROX. WEIGHT OF 1.07CT; 12 ROUND BRILLIANT CUT DIAMONDS (SI-1 TO I-1 CLARITY) WITH TOTAL APPROX. WEIGHT OF 1.07CT; TOTAL WEIGHT OF RING IS 4.93DWT
57	TWO STAMPED 14-18KT YELLOW GOLD LADY'S 3 STONE & BUTTERFLY RINGS CONTAINING: 6 WHITE OPALS (ONE IS MISSING, TWO ARE CHIPPED) WITH APPROX. TOTAL WEIGHT OF 0.24CT; 3 NATURAL BLUE SAPPHIRES WITH APPROX. TOTAL WEIGHT OF 1.74CT; 18 ROUND BRILLIANT CUT DIAMONDS (VS-1 TO VS-2 CLARITY) WITH APPROX. TOTAL WEIGHT OF 0.75CT; FOUR BAGUETTE CUT (TAPERED) DIAMONDS (VS-1 TO VS-2 CLARITY) WITH APPROX. TOTAL WEIGHT OF 0.43; TOTAL WEIGHT OF RINGS ARE 6.65DWT
58	TWO STAMPED 14KT YELLOW GOLD LADY'S SOLITAIRE & NUGGET STYLE RINGS CONTAINING: ONE RING W/ FRESHWATER AKOYA CULTURED PEARL; ONE ROUND BRILLIANT CUT DIAMOND (VS-1 CLARITY) WITH APPROX. WEIGHT OF 0.12CT; TOTAL WEIGHT OF RINGS ARE 6.82DWT
59	TWO STAMPED 14KT WHITE GOLD LADY'S BOW DESIGN & ENGAGEMENT RINGS CONTAINING: ONE ROUND BRILLIANT CUT DIAMOND (VS-2 CLARITY) WITH APPROX. WEIGHT OF 1.00CT; 14 OLD EUROPEAN SINGLE CUT DIAMONDS (VS-1 TO VS-2 CLARITY) WITH AN APPROX. WEIGHT OF 0.22CT; ONE BEZEL SET ROUND BRILLIANT CUT DIAMOND (VS-1 CLARITY) WITH APPROX. WEIGHT OF 0.44CT; TOTAL WEIGHT OF DIAMONDS ARE 1.66CT, TOTAL WEIGHT OF RINGS ARE 5.99DWT

LOT 59



LOT 67



LOT 71



60	ONE LADY'S HILTON WRIST WATCH STAMPED 14KT YELLOW GOLD CONTAINING: 22 SINGLE CUT DIAMONDS (SI-1 TO SI CLARITY) WITH TOTAL APPROX. WEIGHT OF 0.43CT; TOTAL WEIGHT OF WATCH IS 38.89DWT
61	ONE STAMPED 14KT YELLOW GOLD LADY'S ENGAGEMENT RING CONTAINING: ONE ROUND BRILLIANT CUT DIAMOND (SI-1 CLARITY) WITH APPROX. WEIGHT OF 0.84CT; 10 CHANNEL SET BAGUETTE CUT (TAPERED) DIAMONDS (VS-1 TO VS-2 CLARITY) WITH TOTAL APPROX. WEIGHT OF 0.29CT; TOTAL WEIGHT OF RING IS 2.46DWT
62	ONE STAMPED 14KT YELLOW GOLD LADY'S MOTIF PENDANT ATTACHED TO 18" CHAIN CONTAINING: ONE EMERALD STANDARD STEP CUT NATURAL BLUE SAPPHIRE WITH APPROX. WEIGHT OF 1.08CT; 16 ROUND BRILLIANT CUT DIAMONDS (SI-2 TO I-1 CLARITY) WITH APPROX. WEIGHT OF 0.50CT; TOTAL WEIGHT OF PENDANT/CHAIN IS 8.22DWT
63	ONE ELECTRONICALLY TESTED 18KT YELLOW GOLD LADY'S VICTORIAN BRACELET CONTAINING: ONE OVAL MODIFIED MIXED CUT NATURAL CITRINE QUARTZ WITH APPROX. WEIGHT OF 5.83CT; TOTAL WEIGHT OF BRACELET IS 6.34DWT
64	ONE STAMPED 14KT WHITE GOLD LADY'S RETRO RING CONTAINING: ONE EMERALD STANDARD STEP CUT NATURAL AQUAMARINE WITH APPROX. WEIGHT OF 13.24CT; TWO BAGUETTE CUT DIAMONDS (VS-1 TO VS-2 CLARITY) WITH APPROX. WEIGHT OF 0.25CT; TOTAL WEIGHT OF RING IS 6.57DWT
65	KEN GRIFFEY JR, RYNE SANDBURG ROOKIE CARDS, MICHAEL JORDAN
66	14K YELLOW GOLD CUFF LINKS 15.6G
67	10 OZ .999 FINE SILVER; GOLD PLATED .999 SILVER \$1,000,000 BILL APPROX. 4 OUNCES. THREE TWO OUNCE .999 FINE SILVER COIN REPLICAS; MORGAN DOLLAR, MERCURY DIME, BUFFALO NICKEL
68	BARBER COINAGE: 18 HALF DOLLARS: 2-1894S, 1896O, 2-1897 [ONE DAMAGED], 1898S, 2-1901, 1902, 1902S, 1904, 1906D, 1907D, 1909, 2-1912S, 1915D, 1915S; 39 BARBER QUARTERS: 1892, 1894, 2-1897, 1898, 2-1899, 1901, 1902, 4-1903, 1904, 1906, 1906D, 1907, 1907S, 2-1908D, 1908O, 1908S, 3-1909, 2-1909D, 1910, 1911D, 1912, 1913D, 3-1914, 1916, 4-1916D
69	2 U.S. 1966 \$100 RED SEAL NOTES
70	2 U.S. LARGE SIZE ONE DOLLAR NATIONAL CURRENCY NOTE SERIES 1918 FEDERAL RESERVE OF BOSTON, FEDERAL RESERVE OF ST LOUIS
71	U.S. LARGE SIZE TWO DOLLAR SILVER CERTIFICATE SERIES 1899
72	U.S. LARGE SIZE TWO DOLLAR NOTE SERIES 1917
73	U.S. LARGE SIZE FIVE DOLLAR NATIONAL CURRENCY NOTE SERIES 1902 FEDERAL RESERVE OF CITY OF NEW YORK
74	23 PEACE DOLLARS COMMON MIXED DATES AND MINT MARKS
75	AMERICAN GOLD EAGLE PROOF SET CONTAINING: 1 OUNCE, HALF OUNCE, QUARTER OUNCE, ONE TENTH OUNCE
76	HAMILTON 992B 21J POCKET WATCH G.F. CASE, RUNNING W/ G.F. VEST KNIFE AND CHAIN
77	FRANKLIN HALF DOLLAR COLLECTION IN DANSKO ALBUM 1948-1963 COMPLETE [35 PCS]

LOT 75



LOT 76



LOT 80



78	203 INDIAN CENTS; ASSORTED MIXED DATES
79	174 WASHINGTON QUARTERS, COMMON MIXED DATES AND MINT MARKS; ALL PRE 1965
80	168 BARBER DIMES COMMON MIXED DATES AND MINT MARKS, AND 1891 SEATED DIME
81	544 ROOSEVELT DIMES: 532 COMMON MIXED DATES AND MINT MARKS, 12 CLAD
82	257 MERCURY DIMES AND OTHER: 257 MERCURY DIMES COMMON DATES AND MINT MARKS, 7 ROOSEVELT DIMES ALL PRE 1965
83	MISC AMBER JEWELRY; 3 TESTED BASE METAL WIRE WORK RINGS CONTAINING: 3 MARQUISE CABOCHON STANDARD CUT NATURAL AMBERS WITH APPROX. WEIGHT OF 16.29CT; TOTAL WEIGHT OF RINGS IS 10.73DWT. THREE ELECTRONICALLY TESTED GOLD PLATED & SILVER CAST RINGS CONTAINING: ONE ROUND AND ONE OVAL CABOCHON OPAQUE AMBER AND ONE OVAL YELLOW PLASTIC STONE; TOTAL WEIGHT OF RINGS IS 18.36DWT. ONE LOT OF TESTED BASE METAL BEAD & WIRE WORK NECKLACES CONTAINING: 9 BRIOLETTE STANDARD CUT NATURAL AMBERS WITH APPROX. WEIGHT OF 74.43CT; TOTAL WEIGHT OF NECKLACES ARE 55.54DWT. ONE TESTED BASE METAL LADY'S PENDANT & CHAIN CONTAINING: ONE FREE-FORM CABOCHON CUT NATURAL AMBER WITH APPROX. WEIGHT OF 111.78CT; TOTAL WEIGHT OF PENDANT & CHAIN IS 20.68DWT. THREE BEAD NECKLACES THAT ARE TRANSPARENT TO OPAQUE FREEFORM AMBER; TOTAL WEIGHT OF NECKLACES ARE 128.97DWT
84	TWO STAMPED 14KT-18KT YELLOW GOLD LADY'S BEE AND HORSE PINS CONTAINING: ONE BRILLIANT CUT DIAMOND (SI-2 CLARITY) WITH APPROX. WEIGHT OF 0.08CT; 6 MODIFIED MIXED CUT NATURAL BLUE SAPPHIRES WITH APPROX. WEIGHT OF 0.66CT; TOTAL WEIGHT OF PINS ARE 9.43DWT
85	ONE SET OF SILVER ENAMELED AND WATERCOLOR LIPSTICK HOLDER (MISSING BOTTOM PIECE) AND COMPACT
86	ONE LOT TESTED BASE METAL & SILVER LADY'S BRACELETS; ONE BRACELET IS SET WITH AN OVAL OPAQUE YELLOW AMBER STONE; OTHER BRACELETS ARE SILVER; BEADED BRACELET CONTAINS PURPLE GLASS STONE; TOTAL WEIGHT OF BRACELETS ARE 157.88DWT
87	ONE STAMPED 14KT YELLOW GOLD LADY'S SOLITAIRE RING CONTAINING: ONE EMERALD STANDARD STEP CUT NATURAL AQUAMARINE WITH APPROX. WEIGHT OF 5.70CT; TOTAL WEIGHT OF RING IS 2.50DWT
88	EARLY ILLINOIS FIRE ASSOCIATION HORSE HOSE WAGON TEAM RACE CHAMPION MARKED 14K, 20.5G; 14K KNIGHTS TEMPLAR WATCH FOB 17.5G

LOT 83



LOT 84



LOT 85



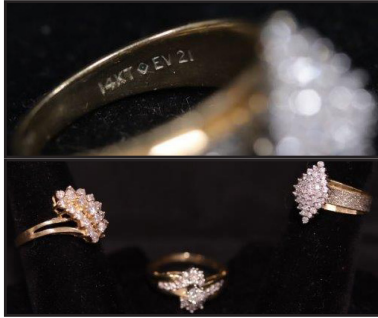
LOT 88



LOT 91



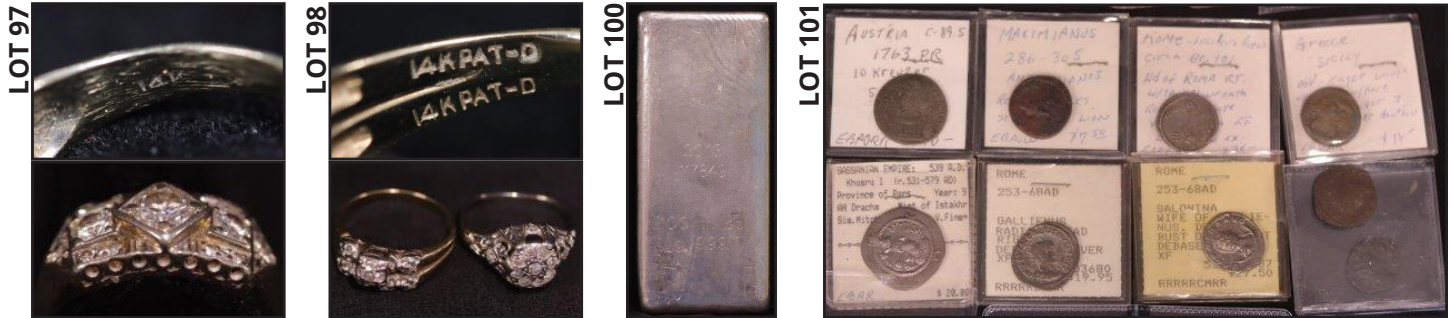
LOT 92



LOT 96



89	MISC SILVER JEWELRY; TWO STAMPED & TESTED STERLING SILVER FLUTED RINGS, WITH ONE RING SET WITH A BEAR CLAW AND OVAL CABOCHON TURQUOISE STONE; TOTAL WEIGHT OF RINGS ARE 20.48DWT. ONE ELECTRONICALLY TESTED STERLING SILVER LADY'S SOLITAIRE RING CONTAINING: ONE OVAL CABOCHON STANDARD CUT NATURAL SALMON CORAL WITH APPROX. WEIGHT OF 1.49CT; TOTAL WEIGHT OF RING IS 5.81DWT. TWO PAIRS TESTED STERLING SILVER LADY'S ZUNI CLUSTER EARRINGS, WITH ONE PAIR INLAID IN SILVER AND THE OTHER WITH SET OF ROUND AND PEAR SHAPED CABOCHON TURQUOISE STONES; TOTAL WEIGHT OF EARRINGS ARE 6.17DWT. ONE TESTED STERLING SILVER FLEUR DI LIS BROOCH CONTAINING: ONE OVAL STANDARD CUT NATURAL TURQUOISE WITH APPROX. WEIGHT OF 2.23CT; TOTAL WEIGHT OF BROOCH IS 12.56DWT. ONE TESTED STERLING SILVER CLUSTER PENDANT INLAID WITH TURQUOISE; TOTAL WEIGHT OF PENDANT IS 20.83DWT
90	ONE LOT STAMPED STERLING SILVER CUFF BRACELETS; TOTAL WEIGHT OF BRACELETS ARE 100.98DWT
91	ONE LOT STAMPED STERLING SILVER LADY'S NAVAJO & ZUNI SOUTHWEST RINGS SET WITH TURQUOISE, CORAL, MOTHER OF PEARL, AND EBONY; TOTAL WEIGHT OF RINGS ARE 72.28DWT
92	ONE LOT STAMPED 14KT YELLOW GOLD LADY'S CLUSTER RINGS CONTAINING: 19 BRILLIANT CUT DIAMONDS (SI-1 TO I-1 CLARITY) WITH APPROX. WEIGHT OF 1.50CT; 21 BRILLIANT CUT DIAMONDS (SI-2 TO I-1 CLARITY) WITH APPROX. WEIGHT OF 1.00CT; 36 BRILLIANT CUT DIAMONDS (I-1 TO I-2 CLARITY) WITH APPROX. WEIGHT OF 0.50CT; TOTAL WEIGHT OF RINGS ARE 8.22DWT
93	THREE RINGS; ONE STAMPED 10KT YELLOW GOLD LADY'S ARTS & CRAFTS RING CONTAINING: ONE RECTANGULAR STANDARD CUT NATURAL AGATE WITH APPROX. WEIGHT OF 4.21CT; TOTAL WEIGHT OF RING 2.33DWT. ONE STAMPED 18KT YELLOW GOLD LADY'S LEAF DESIGN RING SET WITH OVAL CABOCHON AVENTURINE QUARTZ; TOTAL WEIGHT OF RING IS 5.23DWT. ONE STAMPED 14KT WHITE GOLD LADY'S SWIRL RING CONTAINING: ONE BRILLIANT CUT DIAMOND (I-1 CLARITY) WITH APPROX. WEIGHT OF 0.20CT; 16 BRILLIANT CUT DIAMONDS (SI-1 TO I-1 CLARITY) WITH APPROX. WEIGHT OF 0.54CT; 16 MODIFIED MIXED CUT NATURAL EMERALDS WITH APPROX. WEIGHT OF 0.80CT; TOTAL WEIGHT OF RING IS 3.29DWT
94	ONE STAMPED 14KT WHITE GOLD LADY'S ENGAGEMENT RING SOLDERED TO WEDDING BAND CONTAINING: ONE BRILLIANT CUT DIAMOND (I-1 CLARITY) WITH APPROX. WEIGHT OF 0.23CT; 7 BRILLIANT CUT DIAMONDS (SI-2 TO I-1 CLARITY) WITH APPROX. WEIGHT OF 0.76CT; TOTAL WEIGHT OF RING IS 3.52DWT
95	ONE LADY'S TOURNEAU WATCH COMPANY CASE C.D. PEACOCK WRIST WATCH STAMPED 14KT WHITE GOLD CONTAINING: TWO BRILLIANT CUT DIAMONDS (VS-1 TO VS-2 CLARITY) WITH APPROX. WEIGHT OF 0.11CT; 20 SINGLE CUT DIAMONDS (VS-2 TO SI-2 CLARITY) WITH APPROX. WEIGHT OF 0.22CT; TOTAL WEIGHT OF WATCH IS 5.93DWT
96	ONE STAMPED 14KT YELLOW GOLD LADY'S CHARM BRACELET CONTAINING THIRTEEN 14KT YELLOW GOLD CHARMS (UNLESS OTHERWISE STATED), AS WELL AS AN 18KT BLUE ENAMELED BUTTERFLY, 18KT FLEXIBLE FISH, AND 18KT BLUE ENAMELED FISH; TOTAL WEIGHT OF BRACELET IS 37.04DWT



97	ONE STAMPED 14KT WHITE GOLD LADY'S 3-STONE RING CONTAINING: ONE BRILLIANT CUT DIAMOND (I-1 CLARITY) WITH APPROX. WEIGHT OF 0.50CT; 2 BRILLIANT CUT DIAMONDS (SI-1 TO SI-2 CLARITY) WITH APPROX. WEIGHT OF 0.31CT; 2 SINGLE CUT DIAMONDS (VS-2 TO SI-2 CLARITY) WITH APPROX. WEIGHT OF 0.14CT; TOTAL WEIGHT OF RING IS 3.22DWT
98	TWO STAMPED 14-18KT YELLOW AND WHITE GOLD LADY'S FILIGREE & ENGAGEMENT RING SOLDERED TO WEDDING BAND CONTAINING: ONE BRILLIANT CUT DIAMOND (I-1 CLARITY) WITH APPROX. WEIGHT OF 0.11CT; 10 SINGLE CUT DIAMONDS (VS-1 TO VS-2 CLARITY) WITH APPROX. WEIGHT OF 0.11CT; 11 SINGLE CUT DIAMONDS (VS-2 TO I-1 CLARITY) WITH APPROX. WEIGHT OF 0.46CT; TOTAL WEIGHT OF RINGS ARE 4.66DWT
99	ONE ELECTRONICALLY TESTED PLATINUM LADY'S ART DECO BRACELET CONTAINING: 66 OLD EUROPEAN CUT DIAMONDS (VS-1 TO VS-2 CLARITY) WITH APPROX. WEIGHT OF 6.18CT; 5 CABOCHON STANDARD CUT SYNTHETIC BLUE SAPPHIRES WITH APPROX. WEIGHT OF 6.55CT; TOTAL WEIGHT OF BRACELET IS 18.97DWT
100	100 OZ ROYAL CANADIAN MINT .9999 FINE SILVER BAR
101	19 ANCIENT COINS: 2-ROMAN 253-68AD, 6-SASSANIAN EMPIRE 539AD-552AD, BYZANTINE COINS AND OTHERS
102	1052 WHEAT CENTS MIXED DATES AND MINT MARKS
103	ONE STAMPED 14KT WHITE GOLD MAN'S GYPSY RING (MISSING A STONE) CONTAINING: ONE OLD EUROPEAN CUT DIAMOND (SI-2 CLARITY) WITH APPROX. WEIGHT OF 1.26CT; ONE BRILLIANT CUT DIAMOND (I-1 CLARITY) WITH APPROX. WEIGHT OF 0.03CT; TOTAL WEIGHT OF RING IS 6.15DWT
104	ONE ELECTRONICALLY TESTED 18KT YELLOW GOLD LADY'S HALO STYLE RING (CENTER OVAL GARNET IS CRACKED) CONTAINING: 20 MODIFIED MIXED CUT NATURAL ALMANDITE GARNETS WITH APPROX. WEIGHT OF 0.80CT; TOTAL WEIGHT OF RING IS 4.33 DWT
105	1882 CC, 1884 CC UNCIRCULATED MORGAN SILVER DOLLARS
106	10 MORGAN SILVER DOLLARS; 5-1880S, 5-1882S
107	84 PEACE DOLLARS, MIXED COMMON DATES AND MINT MARKS
108	TWO STAMPED & TESTED 14KT-22KT YELLOW GOLD MAN'S SIGNET AND SOLITAIRE RINGS CONTAINING: ONE OLD MINE CUT DIAMOND (I-2 CLARITY) WITH APPROX. WEIGHT OF 0.26CT; TOTAL WEIGHT OF RINGS ARE 10.46DWT





109	ONE LADY'S ABRA WATCH COMPANY CASE ART DECO WRIST WATCH STAMPED 18KT WHITE GOLD SET WITH BAGUETTE FRENCH CUT GREEN GLASS STONES AND CONTAINING: 16 SINGLE CUT DIAMONDS (VS-1 TO SI-1 CLARITY) WITH APPROX. WEIGHT OF 0.22CT; TOTAL WEIGHT OF WATCH IS 10.12DWT
110	1 OZ CANADIAN MAPLE LEAF \$50 GOLD COIN
111	1982-1 OZ KRUGERRAND .999 FINE GOLD
112	2 MORGAN SILVER DOLLARS: 1878CC NGC AU58, 1883CC NGC MS64
113	34 - 1 OUNCE .999 FINE SILVER ENGLEHARD PROSPECTOR ROUNDS
114	ONE STAMPED 18KT YELLOW GOLD RELIGIOUS PENDANT & 16" LONG CHAIN; TOTAL WEIGHT OF PENDANT AND CHAIN IS 9.27DWT
115	1831 U.S. CAPPED BUST HALF DOLLAR PGCS GRADED AU50
116	2 U.S. CAPPED BUST HALF DOLLARS: 1807 ANACS VF30 SCRATCHED, 1810 ANACS EF 40
117	2009 U.S. FIVE DOLLAR AMERICAN GOLD EAGLE NGC MS70 BLUE EARLY RELEASES
118	4-14K GOLD BANDS 14.7G TL WT
119	4-14K SCRAP GOLD RINGS MISSING STONES 38.8G TL WT
120	14K GOLD MISC RINGS: SOME DAMAGED, MISSING STONES 23.0G TL WT
121	8-10K GOLD RINGS 47.0G
122	10-10K SCRAP GOLD RINGS MISSING STONES, DAMAGED 22.6G TL WT
123	4-10K GOLD RINGS 10.4G
124	ONE STAMPED 14KT YELLOW GOLD LADY'S BANGLE STYLE BRACELET CONTAINING: 8 CABOCHON STANDARD CUT NATURAL EMERALDS WITH APPROX. WEIGHT OF 2.64CT; 20 MODIFIED MIXED CUT NATURAL EMERALDS WITH APPROX. WEIGHT OF 1.20CT; 38 MODIFIED MIXED CUT NATURAL RUBIES WITH AN APPROX. WEIGHT OF 4.94CT; 60 NATURAL SEED PEARLS; TOTAL WEIGHT OF BRACELET IS 30.61DWT
125	14K YELLOW GOLD CHAIN BRACELET 63.2G TL WT
126	18K YELLOW GOLD BOW PIN 15.1G
127	5-14K GOLD RINGS 16.7G
128	93 U.S. WASHINGTON QUARTERS ALL PRE 1965
129	83 FRANKLIN HALF DOLLARS MIXED DATES AND MINT MARKS
130	ONE MAN'S LONGINES WRIST WATCH STAMPED 14KT YELLOW GOLD; TOTAL WEIGHT OF WATCH IS 29.58DWT
131	THREE STAMPED & TESTED 14-18KT YELLOW GOLD LADY'S CLUSTER RINGS CONTAINING: 9 BRILLIANT CUT DIAMONDS (VS-1 TO VS-2 CLARITY) WITH APPROX. WEIGHT OF 0.85CT; 7 MODIFIED MIXED CUT NATURAL RUBIES WITH APPROX. WEIGHT OF 0.42CT; 12 CABOCHON STANDARD CUT NATURAL TURQUOISES (ONE STONE IS IMITATION TURQUOISE) WITH APPROX. WEIGHT OF 0.84CT; 26 ADOYA CULTURED PEARLS; TOTAL WEIGHT OF RINGS ARE 17.80DWT

LOT 132



LOT 133



LOT 134

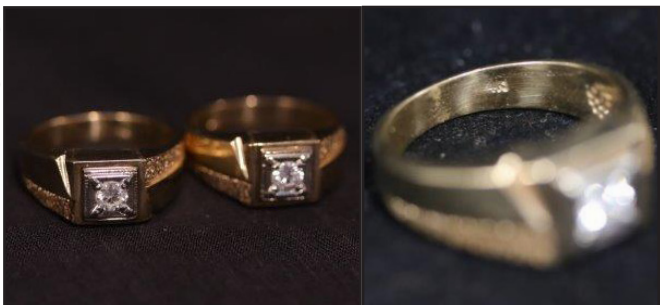


132	ONE STAMPED 14KT YELLOW AND WHITE GOLD MAN'S CLUSTER NUGGET RING CONTAINING: 7 BRILLIANT CUT DIAMONDS (SI-1 TO I-1 CLARITY) WITH APPROX. WEIGHT OF 1.00CT; TOTAL WEIGHT OF RING IS 6.80DWT
133	ONE STAMPED 14KT YELLOW GOLD LADY'S 2-STONE RING CONTAINING: ONE BRILLIANT CUT DIAMOND (I-3 CLARITY) WITH APPROX. WEIGHT OF 0.46CT; ONE BRILLIANT CUT DIAMOND (SI-2 CLARITY) WITH APPROX. WEIGHT OF 0.41CT; 30 SINGLE CUT DIAMONDS (VS-2 TO SI-1 CLARITY) WITH APPROX. WEIGHT OF 0.41CT; TOTAL WEIGHT OF RING IS 7.05DWT
134	THREE GOLD RINGS; ONE STAMPED 14KT WHITE GOLD LADY'S CLUSTER RING CONTAINING: 18 MODIFIED MIXED CUT NATURAL BLUE SAPPHIRES WITH APPROX. WEIGHT OF 0.72CT; 3 BRILLIANT CUT DIAMONDS (VS-1 TO VS-2 CLARITY) WITH APPROX. WEIGHT OF 0.09CT; TOTAL WEIGHT OF RING IS 2.26DWT. ONE STAMPED 14KT WHITE GOLD LADY'S ART DECO FILIGREE RING CONTAINING: 2 SHIELD MODIFIED MIXED CUT SYNTHETIC RUBIES WITH APPROX. WEIGHT OF 1.70CT; TOTAL WEIGHT OF RING IS 1.32DWT. ONE STAMPED 14KT YELLOW GOLD LADY'S CLUSTER RING CONTAINING: 7 MODIFIED MIXED CUT NATURAL BLUE SAPPHIRES WITH APPROX. WEIGHT OF 0.56CT; TOTAL WEIGHT OF RING IS 3.39DWT
135	ONE STAMPED 14KT YELLOW GOLD MAN'S DIAMOND SHAPED CLUSTER RING CONTAINING: ONE BRILLIANT CUT DIAMOND (I-1 CLARITY) WITH APPROX. WEIGHT OF 0.39CT; 8 BRILLIANT CUT DIAMONDS (SI-1 TO I-1 CLARITY) WITH APPROX. WEIGHT OF 0.49CT; TOTAL WEIGHT OF RING IS 5.74DWT
136	TWO STAMPED 14KT YELLOW GOLD LADY'S SOLITAIRE RINGS CONTAINING: ONE MARQUISE SHAPED CUT DIAMOND (SI-2 CLARITY) WITH APPROX. WEIGHT OF 1.13CT; ONE MARQUISE MODIFIED MIXED CUT NATURAL BLUE TOPAZ WITH APPROX. WEIGHT OF 1.88CT; TOTAL WEIGHT OF RINGS ARE 3.34DWT
137	ONE PAIR STAMPED 14KT YELLOW GOLD MAN'S SOLITAIRE RINGS CONTAINING: 2 BRILLIANT CUT DIAMONDS (SI-1 CLARITY) WITH APPROX. WEIGHT OF 0.40CT; TOTAL WEIGHT OF RINGS ARE 8.01DWT
138	THREE ELECTRONICALLY TESTED 14-18KT YELLOW GOLD RINGS CONTAINING: ONE MAN'S RING WITH AN OVAL SYNTHETIC BLUE SPINEL; ONE LADY'S RING SET WITH 7 TOTAL ROUND SYNTHETIC PINK SAPPHIRES; ONE LADY'S RING SET WITH TWO IMITATION WHITE STONES AND ONE CULTURED PEARL; TOTAL WEIGHT OF RINGS ARE 12.34DWT

LOT 135



LOT 137



LOT 140



LOT 150



LOT 161



139	ONE STAMPED 18KT YELLOW GOLD LADY'S 3-STONE RING SET WITH AN OVAL SYNTHETIC SPINEL AND 2 COLORLESS ROUND SYNTHETIC SPINELS; TOTAL WEIGHT OF RING IS 4.98DWT
140	ONE LADY'S LUCIEN PICCARD WRIST WATCH STAMPED 14KT WHITE GOLD (COMES WITH 3 EXTRA LINKS, AS WELL AS BOX AND PAPERS) CONTAINING: 6 SINGLE CUT DIAMONDS (VS-1 TO VS-2 CLARITY) WITH APPROX. WEIGHT OF 0.05CT; TOTAL WEIGHT OF WATCH IS 9.00DWT
141	4-14K YELLOW GOLD BRACELETS 34.34G TL WT
142	14K YELLOW GOLD EARRINGS: 12 PAIR, 1 SINGLE 39.6G TL WT
143	8 BANGLES: 4-14K YELLOW GOLD 24.7G TL WT, 4 GOLD FILLED 44.6G TL WT
144	24 FRANKLIN MINT STERLING SILVER PROOFS GALLERY OF GREAT AMERICANS; EACH COIN WEIGHS 27.0G.
145	79-1958 UNCIRCULATED WASHINGTON QUARTERS
146	COMMEMORATIVE COINS: 1983, 1984 PROOF DOLLAR SETS, 1983 OLYMPIC PROOF DOLLAR, 3 LIBERTY PROOF DOLLAR AND HALF DOLLAR SETS, 1986 LIBERTY PROOF DOLLAR, 1990 EISENHOWER PROOF DOLLAR, 1993 BILL OF RIGHTS PROOF DOLLAR AND HALF, 1994 VETERANS COMMEMORATIVE SILVER DOLLAR 3 COIN SET, 1995 CIVIL WAR BATTLEFIELD COIN SET, 2-1998 UNCIRCULATED BLACK REVOLUTION
147	18 U.S. LARGE CENTS: 1803 WEAK, 1824 DAMAGED, 2-1828 [ONE WITH HOLE], 1831, 1837, 1838, 1844, 2-1846, 1847, 2-1850 BOTH DAMAGED, 1851, 1852, 1853, 1854, ONE NO DATE
148	U.S. FLYING EAGLE CENTS: 1857, 1858 LARGE LETTERS
149	TWO STAMPED 14KT YELLOW, WHITE, AND ROSE GOLD LADY'S BRACELETS; TOTAL WEIGHT OF BRACELETS ARE 16.16DWT
150	9 NGC GRADED MORGAN SILVER DOLLARS: 1878S MS64, 1881S, 1883O, 1884O, 1885, 1885O, 1886, 1887, 1889 ALL GRADED MS62
151	95 ONE DOLLAR SILVER CERTIFICATES
152	138 TWO DOLLAR RED SEAL NOTES
153	105 WALKING LIBERTY HALF DOLLARS COMMON MIXED DATES AND MINT MARKS
154	631 MERCURY DIMES MIXED DATES AND MINT MARKS
155	342 WASHINGTON QUARTERS COMMON MIXED DATES AND MINT MARKS, ALL PRE 1965
156	24-1968 U.S. PROOF SETS
157	24 U.S. STATE QUARTER SETS 1999-2004: 6 PLATINUM EDITION SETS. 6 GOLD EDITION SETS, 6 DENVER EDITION SETS, 6 PHILADELPHIA MINT EDITION SETS
158	50 FRANKLIN MINT STATE OF THE UNION SERIES STERLING PROOF COINS 10 CARDS EACH CONTAINING 5 COINS AT 13.8G EACH
159	2 U.S. LIBERTY HEAD TWENTY DOLLAR GOLD COINS: 1884S, 1889S
160	120 FRANKLIN HALF DOLLARS: 20-1958, 20-1962, 80-1963



161	3 BROKEN BANK NOTES: TWENTY DOLLAR CANAL BANK OF NEW ORLEANS UNUSED, TWENTY DOLLAR CITIZENS BANK OF LOUISIANA AT SHREVEPORT UNUSED, FIFTY DOLLAR CANAL BANK OF NEW ORLEANS
162	1853 U.S. \$2 1/2 GOLD COIN
163	OBSOLETE COINAGE: SEATED LIBERTY HALF DOLLARS; 1853 W/ARROWS [TAPE RESIDUE ON OBVERSE], 1875, 1876, 1891; 1853 THREE CENT SILVER
164	453 FOREIGN COINS FROM VARIOUS COUNTRIES
165	22 MORGAN SILVER DOLLARS: 11-1880S, 11-1882S
166	12 - 1 OZ .999 FINE SILVER BARS
167	1987 50 YUAN 5 OZ .999 SILVER PANDA
168	1990P ONE TENTH OUNCE AMERICAN GOLD EAGLE PROOF
169	2-1915 AUSTRIA 4 DUCAT GOLD COINS: .986 GOLD, 13.96G
170	17 POLAR BEAR TOBACCO BASEBALL CARDS AND OTHERS ALL EARLY 1900'S
171	4-1992 COLUMBIAN EXPOSITION COMMEMORATIVE 1 OZ .999 FINE SILVER EACH
172	ONE LADY'S BLANCPAIN OVAL SHAPE RAYVILLE WRIST WATCH STAMPED 14KT WHITE GOLD CONTAINING: 12 BRILLIANT CUT DIAMONDS (VS-1 TO VS-2 CLARITY) WITH APPROX. WEIGHT OF 1.37CT; 12 BRILLIANT CUT DIAMONDS (VS-2 TO SI-2 CLARITY) WITH APPROX. WEIGHT OF 2.61CT; 16 BRILLIANT CUT DIAMONDS (VS-1 TO VS-2 CLARITY) WITH APPROX. WEIGHT OF 0.68CT; 16 MODIFIED MIXED CUT NATURAL EMERALDS WITH APPROX. WEIGHT OF 0.80CT; TOTAL WEIGHT OF WATCH IS 39.62DWT
173	ONE STAMPED 14KT YELLOW GOLD 9 STONE RING CONTAINING: ONE BRILLIANT CUT DIAMOND (SI-2 CLARITY) WITH APPROX. WEIGHT OF 1.00CT; 8 BRILLIANT CUT DIAMONDS (VS-1 TO SI-1 CLARITY) WITH APPROX. WEIGHT OF 0.25CT; TOTAL WEIGHT OF RING IS 5.90DWT
174	ONE ELECTRONICALLY TESTED PLATINUM TOPPED 14KT YELLOW GOLD LADY'S VICTORIA RING CONTAINING: 3 MODIFIED MIXED CUT NATURAL RUBIES WITH APPROX. WEIGHT OF 0.63CT; 19 OLD EUROPEAN CUT DIAMONDS (VS-1 TO SI-2 CLARITY) WITH APPROX. WEIGHT OF 0.52CT; TOTAL WEIGHT OF RING IS 2.01DWT
175	1995W NGC GRADED \$50 AMERICA GOLD EAGLE PF 69 ULTRA CAMEO
176	8 MISC 10K GOLD RINGS
177	6-14K GOLD RINGS
178	22K YELLOW GOLD BANGLE BRACELET 14.2G
179	14K YELLOW GOLD BRAIDED CHAIN NECKLACE AND BEZEL CONTAINING: U.S. 1902S LIBERTY HEAD GOLD COIN, TL WT INCLUDING COIN 27.5G
180	ONE ELECTRONICALLY TESTED 18KT YELLOW GOLD HERMES MAN'S CHAIN BRACELET; TOTAL WEIGHT OF BRACELET IS 56.78DWT

LOT 167



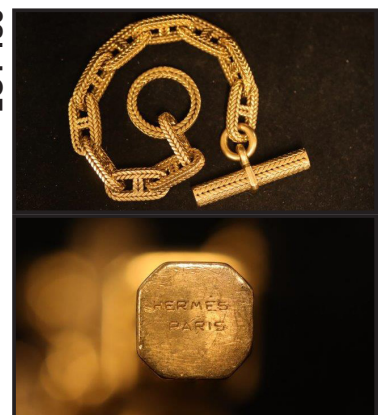
LOT 175



LOT 170

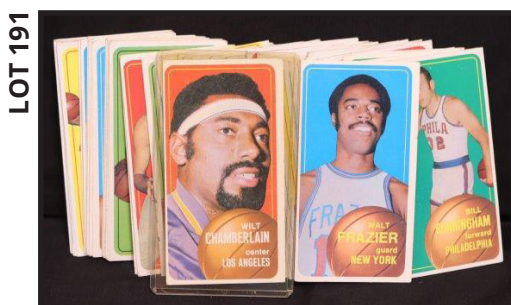


LOT 180

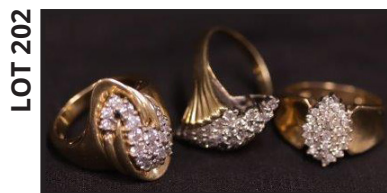
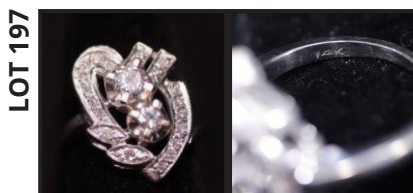




181	ONE ELECTRONICALLY TESTED 14KT WHITE GOLD LADY'S ART DECO ENGAGEMENT RING CONTAINING: ONE OLD EUROPEAN CUT DIAMOND (VS-1 CLARITY) WITH APPROX. WEIGHT OF 0.54CT; TWO TRIANGLE MODIFIED MIXED SYNTHETIC BLUE SAPPHIRES WITH APPROX. WEIGHT OF 0.16CT; TOTAL WEIGHT OF RING IS 1.65DWT
182	TWO ELECTRONICALLY TESTED 18KT YELLOW GOLD LADY'S FLOWER DESIGN BRACELETS (LARGER BRACELET HAS ONE REPLACED SYNTHETIC RUBY) CONTAINING: 2 MODIFIED MIXED CUT NATURAL RUBIES WITH APPROX. WEIGHT OF 0.66CT; 81 MODIFIED MIXED CUT NATURAL RUBIES WITH APPROX. WEIGHT OF 1.62CT; 58 NATURAL SEED PEARLS; TOTAL WEIGHT OF BRACELETS ARE 20.02DWT
183	ONE STAMPED 14KT YELLOW GOLD LADY'S CHARM CHAIN BRACELET W/ SEVEN CHARMS, ONE BEING 18KT, AND THE REST 14KT; TOTAL WEIGHT OF BRACELET IS 56.95DWT
184	ONE MAN'S BULOVA WRIST WATCH STAMPED 14KT YELLOW GOLD CONTAINING: 36 SINGLE CUT DIAMONDS (VS-1 TO VS-2 CLARITY) WITH APPROX. WEIGHT OF 0.32CT; TOTAL WEIGHT OF WATCH IS 36.44DWT
185	THREE ELECTRONICALLY TESTED STERLING SILVER BANGLE STYLE BRACELETS FLUSH SET WITH RUBIES AND MULTICOLOR SAPPHIRES; TOTAL WEIGHT OF BRACELETS ARE 81.36DWT
186	4 U.S. MINT PREMIER SILVER PROOF SETS: 1992, 1995, 1996, 1998
187	25 U.S. PROOF SETS: 1978, 2-1979, 2-1980, 2-1981, 5-1982, 4-1983, 3-1988, 6-1992
188	20 U.S. 1968 MINT SETS
189	1998 \$25 AMERICAN GOLD EAGLE 1/4OZ .999 FINE GOLD
190	3 FLEER BASKETBALL WAX PACKS: 1986, 1987, 1988
191	168 1969-1970 BASKETBALL CARDS INCLUDING: WALT FRAZIER, WILT CHAMBERLAIN, BILL CUNNINGHAM
192	TWO STAMPED PLATINUM & 14KT YELLOW GOLD LADY'S HORSE SHOE AND CLUSTER PIN/PENDANTS CONTAINING: 6 OVAL SHAPED CABOCHON CUT CRYSTAL OPALS WITH APPROX. WEIGHT OF 3.30CT; ONE ROUND SHAPED CUT CRYSTAL OPAL (BROKEN) WITH APPROX. WEIGHT OF 0.12CT; 18 BRILLIANT CUT DIAMONDS (VS-2 TO SI-1 CLARITY) WITH APPROX. WEIGHT OF 0.61CT; 9 BRILLIANT CUT DIAMONDS (VS-1 TO VS-2 CLARITY) WITH APPROX. WEIGHT OF 0.69CT; 8 MODIFIED MIXED CUT SYNTHETIC RUBIES WITH APPROX. TOTAL WEIGHT OF 0.88CT; TOTAL WEIGHT OF PINS/PENDANTS ARE 13.87DWT
193	ONE STAMPED 14KT YELLOW GOLD MAN'S SOLITAIRE RING CONTAINING: ONE BRILLIANT CUT DIAMOND (VS-1 CLARITY) WITH APPROX. WEIGHT OF 0.28CT; TOTAL WEIGHT OF RING IS 7.07DWT



194	3 STERLING CHARM BRACELETS 232.1G TL WT
195	18K YELLOW GOLD BANGLE BRACELETS 23.9G TL WT
196	14K BRACELET W/ SM DIAMONDS 12.4G TL WT
197	ONE STAMPED 14KT WHITE GOLD LADY'S 2-STONE RETRO MODERN RING CONTAINING: TWO BRILLIANT CUT DIAMONDS (VS-1 CLARITY) WITH APPROX. WEIGHT OF 0.44CT; 20 SINGLE CUT DIAMONDS (VS-1 TO SI-2 CLARITY) WITH APPROX. WEIGHT OF 0.15CT; TOTAL WEIGHT OF RING IS 3.59DWT
198	33 PIECES OF GORAM KING EDWARD PATTERN STERLING FLATWARE: 8 DINNER FORKS 374.5G, 7 SALAD/DESSERT FORKS 267.6G, 8 TEASPOONS 250.7G, 1 SOUP SPOON 36.1G, 1 BUTTER KNIFE 25.7G, 8 TABLE KNIVES 124.4G [EST]
199	ONE MAN'S VALE & ROTHERHAM OPEN FACE STYLE COVENTRY POCKET WATCH STAMPED 18KT YELLOW GOLD; TOTAL WEIGHT OF WATCH IS 58.64DWT
200	2-14K YELLOW GOLD HERRINGBONE NECKLACES 19.3G TL WT
201	ONE LADY'S PANTO WATCH COMPANY WRIST WATCH STAMPED 14KT YELLOW GOLD CONTAINING: 14 SINGLE CUT DIAMONDS (VS-1 TO VS-2 CLARITY) WITH APPROX. WEIGHT OF 0.21CT; TOTAL WEIGHT OF WATCH IS 27.15DWT
202	THREE STAMPED 14KT YELLOW GOLD LADY'S CLUSTER RINGS CONTAINING: 31 BRILLIANT CUT DIAMONDS (I-2 TO I-3 CLARITY) WITH APPROX. WEIGHT OF 0.61CT; 19 BRILLIANT CUT DIAMONDS (SI-2 TO I-1 CLARITY) WITH APPROX. WEIGHT OF 1.00CT; 21 BRILLIANT CUT DIAMONDS (I-1 TO I-2 CLARITY) WITH APPROX. WEIGHT OF 1.00CT; TOTAL WEIGHT OF RINGS ARE 14.40DWT
203	THREE ELECTRONICALLY TESTED 10-18KT YELLOW GOLD LADY'S PINS, WITH ONE BEING A VICTORIAN MOURNING BROOCH W/ BLACK GLASS AND 3 NATURAL SEED PEARLS; PINS CONTAIN: 12 BRILLIANT CUT DIAMONDS (VS-1 TO VS-2 CLARITY) WITH APPROX. WEIGHT OF 0.82CT; 3 MODIFIED MIXED CUT NATURAL BLUE SAPPHIRES WITH APPROX. WEIGHT OF 0.24CT; TOTAL WEIGHT OF PINS ARE 22.31DWT
204	NECKLACE AND EARRINGS SET; ONE PAIR STAMPED 14KT YELLOW GOLD LADY'S CLUSTER EARRINGS CONTAINING: 8 OVAL SHAPED CABOCHON CUT CRYSTAL OPALS WITH APPROX. WEIGHT OF 1.12CT; 4 BRILLIANT CUT DIAMONDS (SI-1 TO SI-2 CLARITY) WITH APPROX. WEIGHT OF 0.04CT; TOTAL WEIGHT OF EARRINGS ARE 3.72DWT. ONE STAMPED 14KT YELLOW GOLD LADY'S PENDANT & 24" HERRINGBONE CHAIN CONTAINING: 3 MARQUISE SHAPED CABOCHON CUT CRYSTAL OPALS WITH APPROX. WEIGHT OF 1.89CT; 3 BRILLIANT CUT DIAMONDS (SI-2 TO I-1 CLARITY) WITH APPROX. WEIGHT OF 0.05CT; TOTAL WEIGHT OF PENDANT & CHAIN IS 4.22DWT
205	50 AMERICAN SILVER EAGLES .999 FINE SILVER EACH
206	10 U.S. PROOF SETS AND OTHER: PROOF SETS: 2-1961, 1962, 7-1964, 1965 SPECIAL MINT SET
207	1305 WHEAT CENTS MIXED DATES AND MINT MARKS
208	595 ROOSEVELT DIMES 588 PRE 1965 AND 7 CLAD, MIXED DATES AND MINT MARKS
209	10 NGC GRADED COIN: 4 KENNEDY PROOF HALF DOLLARS: 2002S SILVER, 2003S SILVER, 2004S SILVER, 2009S CLAD, ALL PF69 ULTRA CAMEO. 6 ROOSEVELT DIMES: 2000S SILVER, 2001S SILVER, 2002S SILVER, 2004S SILVER, 2007S SILVER, 2009S CLAD, ALL PF69 ULTRA CAMEO





210	230 BUFFALO NICKELS, MIXED COMMON DATES AND MINT MARKS, SOME NO DATE
211	179 JEFFERSON WAR NICKELS
212	20 - 1 OZ SILVER ROUNDS .999 FINE SILVER
213	85 KENNEDY HALF DOLLARS, ALL 1964
214	GOLD BRACELETS; ONE STAMPED 10KT YELLOW GOLD LADY'S TENNIS STYLE BRACELET CONTAINING: 17 EMERALD STEP CUT NATURAL AMETHYSTS WITH APPROX. WEIGHT OF 29.58CT; TOTAL WEIGHT OF BRACELET IS 6.97DWT. ONE STAMPED 14KT YELLOW GOLD LADY'S BANGLE STYLE BRACELET CONTAINING: 9 OVAL SHAPED CABOCHON CUT CRYSTAL OPALS WITH APPROX. WEIGHT OF 2.43CT; TOTAL WEIGHT OF BRACELET IS 10.36DWT
215	ONE STAMPED PLATINUM LADY'S SOLITAIRE ENGAGEMENT RING CONTAINING: ONE OLD EUROPEAN CUT DIAMOND (SI-1 CLARITY) WITH APPROX. WEIGHT OF 2.24CT; TOTAL WEIGHT OF RING IS 2.69DWT
216	ONE STAMPED 14KT YELLOW GOLD MAN'S 2 ROW RING CONTAINING: 17 BRILLIANT CUT DIAMONDS (SI-1 TO SI-2 CLARITY) WITH APPROX. WEIGHT OF 0.19CT; 2 TRIANGLE CABOCHON STANDARD CUT NATURAL LAPIS LAZULIS WITH APPROX. WEIGHT OF 1.24CT; TOTAL WEIGHT OF RING IS 7.29DWT
217	14K YELLOW GOLD NUGGET STYLE BRACELET 34.3G TL WT
218	2-14K YELLOW GOLD BANDS 16.6G TL WT
219	LONGINES 17J POCKET WATCH G.F., RUNNING, ORIGINAL BOX WITH 14K YELLOW GOLD WATCH CHAIN. TL WT OF CHAIN 7.2G
220	COSTUME JEWELRY; 22 BROOCHES
221	12 HESSTON RODEO BELT BUCKLES
222	14K YELLOW GOLD BRAIDED CHAIN NECKLACE 10.9G
223	4 U.S. LARGE NOTES: SERIES 1899 ONE DOLLAR SILVER CERTIFICATE BLACK EAGLE, SERIES 1914 TEN DOLLAR FEDERAL RESERVE, SERIES 1914 FIVE DOLLAR FEDERAL RESERVE, SERIES 1917 U.S. NOTE ONE DOLLAR RED SEAL
224	U.S. NATIONAL CURRENCY ONE DOLLAR LG NOTE SERIES 1914, FEDERAL RESERVE OF CHICAGO
225	TWO ELECTRONICALLY TESTED 18KT YELLOW GOLD LADY'S FLOWER DESIGN BRACELETS CONTAINING: 3 MODIFIED MIXED CUT NATURAL RUBIES WITH APPROX. WEIGHT OF 0.99CT; 81 MODIFIED MIXED CUT NATURAL RUBIES WITH APPROX. WEIGHT OF 1.62CT; 57 NATURAL SEED PEARLS (ONE IS MISSING); TOTAL WEIGHT OF BRACELETS ARE 20.79DWT
226	ONE STAMPED 18KT YELLOW GOLD LADY'S CAMEO PIN/PENDANT AND 20" CHAIN; TOTAL WEIGHT OF PIN/PENDANT AND CHAIN IS 15.55DWT
227	TWO STAMPED 14KT YELLOW GOLD LADY'S ROSE STYLE PINS CONTAINING: 7 MODIFIED MIXED CUT NATURAL RUBIES WITH APPROX. WEIGHT OF 0.84CT; TOTAL WEIGHT OF PINS ARE 11.96DWT
228	GOLD COINS FROM MEXICO: 1945 2 PESO, 1955 PESO GOLD
229	56 FRANKLIN HALF DOLLARS, MIXED DATES AND MINT MARKS
230	200 MERCURY DIMES AND OTHER: 200 MERCURY DIMES MIXED DATES AND MINT MARKS, 2 ROOSEVELT DIMES PRE 65
231	14 EISENHOWER PROOF DOLLARS AND OTHER: 14-1971S IKE PROOFS, 7-1971 EISENHOWER UNCIRCULATED DOLLARS, 10 CIRCULATED IKE DOLLARS

LOT 231



LOT 240



232	U.S. COMMEMORATIVE HALF DOLLARS: 2-1892, 2-1893 COLUMBIAN, 1918 LINCOLN, 1922 GRANT, 1925 STONE MOUNTAIN, 1946 BOOKER T WASHINGTON, 2-1952 WASHINGTON/CARVER
233	2 U.S. \$2 1/2 INDIAN HEAD GOLD COINS: 1914D, 1926
234	50 PEACE DOLLARS: 1921, 49 COMMON MIXED DATES AND MINT MARKS
235	4-14K YELLOW GOLD NECKLACES, 17.4G TL WT
236	2-14K YELLOW GOLD NECKLACES, 15.7G TL WT
237	3-14K YELLOW GOLD NECKLACES, 16.3G TL WT
238	8 MORGAN DOLLARS: 1882CC, 1883CC, 1888, 1891CC, 1921, 2-1921D, 1921S
239	2 MORGAN SILVER DOLLARS: 1889 PGCS MS62, 1921 PGCS MS63
240	PRESIDENTIAL DOLLARS: 2008S PROOF SET PRESIDENT DOLLARS NGC PF69 ULTRA CAMEO, JOHN ADAMS 2007P, 2007D UNC FIRST DAY OF ISSUE, THOMAS JEFFERSON 2007P, 2007D UNC FIRST DAY OF ISSUE, 2007S JEFFERSON PF69 ULTRA CAMEO, 2008P, 2008D JOHN QUINCY ADAMS UNC FIRST DAY OF ISSUE, 2008D UNC
241	8 U.S. FRACTIONAL CURRENCY NOTES: ACT OF 1863 THREE CENT WASHINGTON, 2-TEN CENT, 4-ACT OF 1874 TEN CENT NOTES, AND ONE TWENTY FIVE CENT NOTE
242	3 U.S. MINT PRESTIGE SETS: 1989, 1991, 1994
243	30 U.S. PROOF SETS: 1968, 1969, 1971, 1975, 1981, 2-1982, 3-1983, 2-1984, 1986, 1987, 2-1999, 3-2000, 2-2001, 2-2002, 4-2003, 2005, 2-2003 PROOF STATE QUARTER SETS
244	32 U.S. MINT SETS AND OTHER: 4-1968, 2-1969, 2-1971, 1972, 1974, 1976, 1977, 2-1979, 1980, 1981, 4-1982, 2-1984, 2-1985, 3-1987, 5-1988; 1-1964 (D ONLY)
245	14 U.S. STATE SILVER PROOF QUARTERS ALL GRADED NGC PF69 ULTRA CAMEO PROOF; 3-2000: VIRGINIA, MARYLAND, NEW HAMPSHIRE; 4-2002: OHIO, INDIANA, MISSISSIPPI, TENNESSEE; 3-2003: ARKANSAS, MAINE, MISSOURI; 2-2004: IOWA, WISCONSIN; 2-2009: GUAM, PUERTO RICO
246	221 WASHINGTON QUARTERS AND OTHER: MIXED DATES AND MINT MARKS, ALL PRE 1965; 1 STANDING LIBERTY QUARTER
247	U.S. UNCIRCULATED MORGAN, PEACE, AND SILVER EAGLE DOLLAR SET
248	2 U.S. SILVER/GOLD PROOF SETS: 1987 CONSTITUTION PROOF DOLLAR AND FIVE DOLLAR GOLD COIN, 1988 OLYMPIC PROOF DOLLAR AND FIVE DOLLAR GOLD COIN
249	2-2006P BEN FRANKLIN COMMEMORATIVE DOLLARS: SCIENTIST & FOUNDING FATHER. BOTH GRADED NCG MS70
250	1915 AUSTRIA 100 CORONA GOLD COIN .900 FINE 33.875G

LOT 241



LOT 248



[illegible]

NOTES

This image shows a full page of white paper with horizontal blue ruling lines. The lines are evenly spaced and run across the width of the page. There is no handwriting or other markings on the paper.

